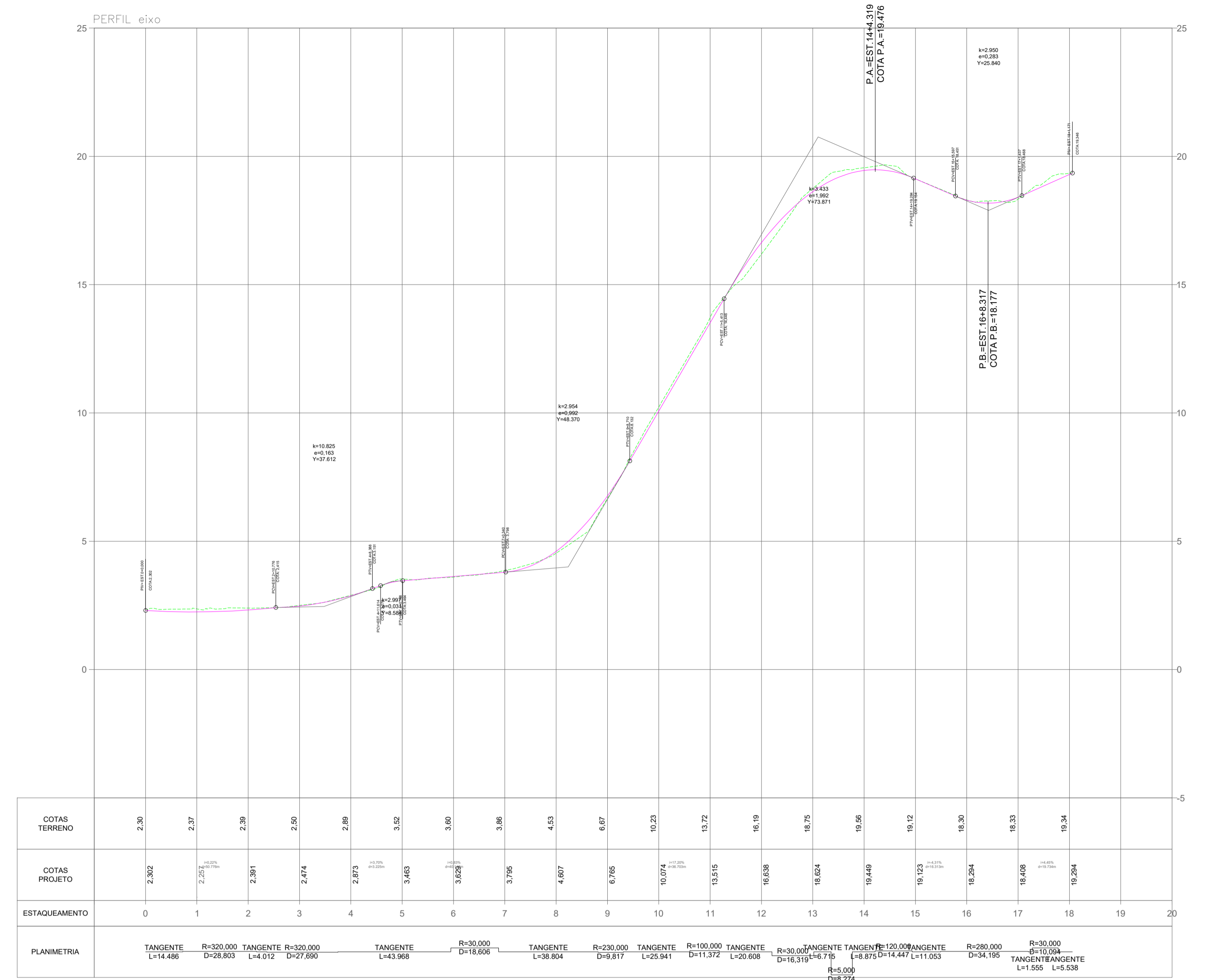
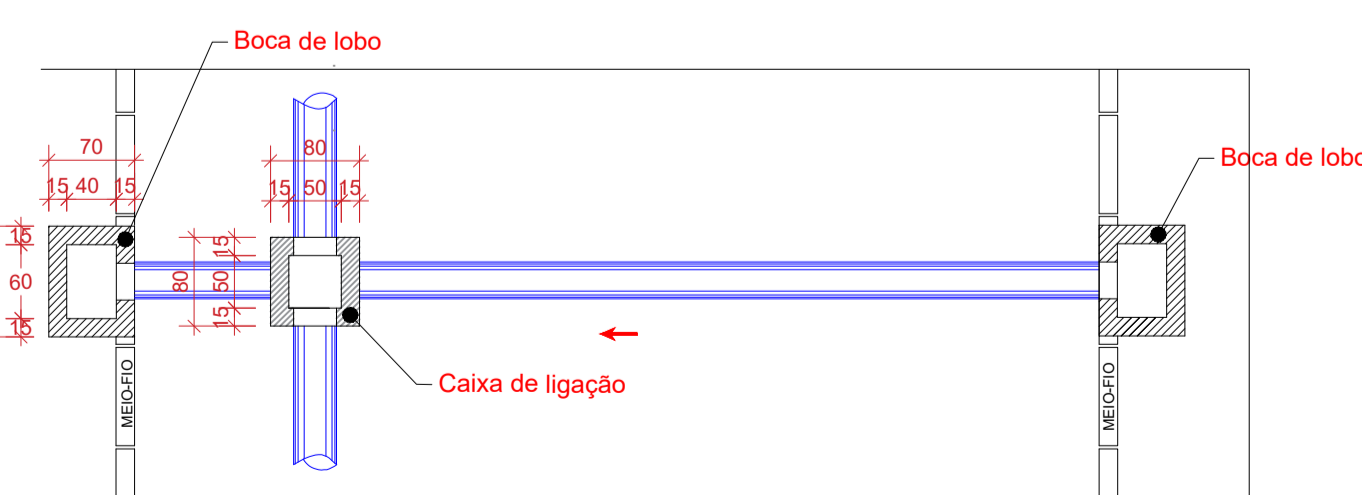
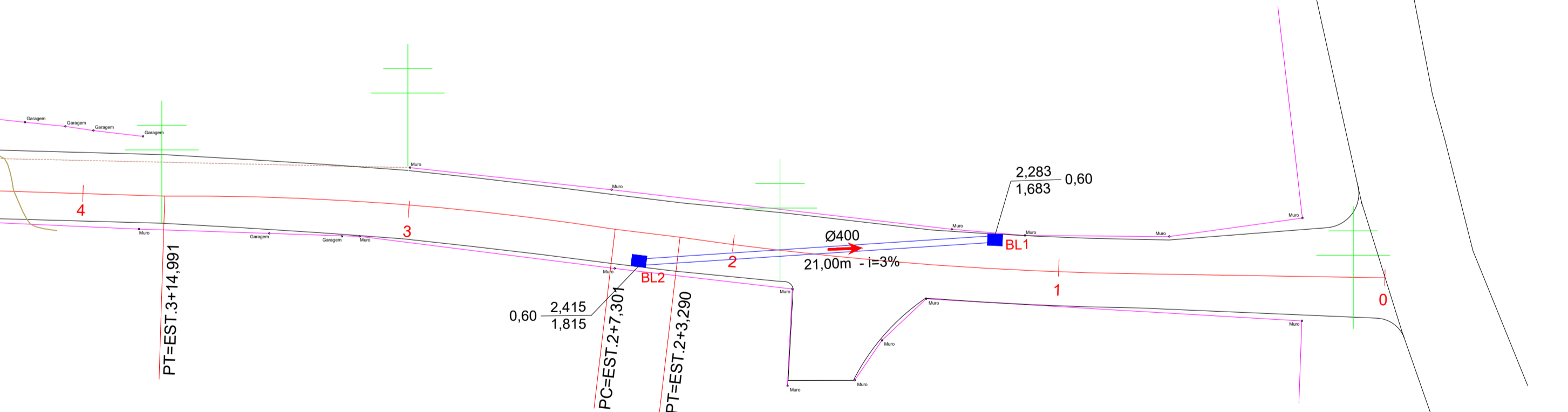


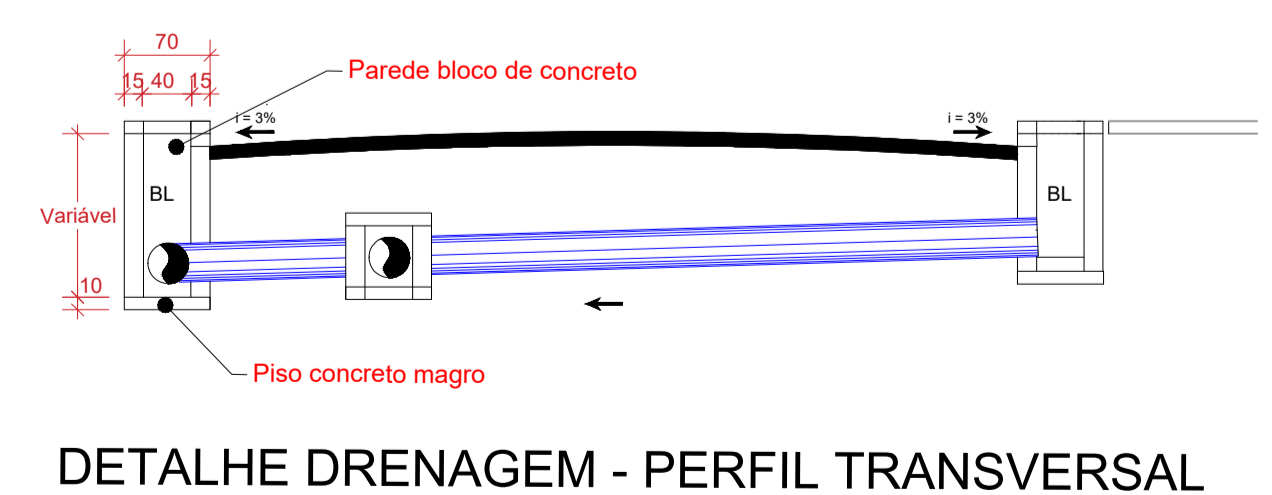
- LEGENDA**
- | Simbologia | Descrição |
|--------------|------------------------|
| BL EXISTENTE | Boca de Lobo Existente |
| BL01 | Boca de Lobo |
| CL01 | Caixa de Ligação |
| → | Sentido do Fluxo |
| Ø400 | Diâmetro |
| 45,20m | Extensão |
| i = 3% | Inclinação |



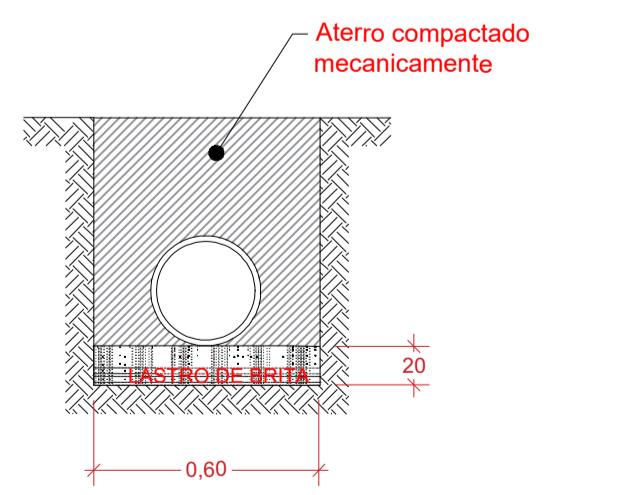
DETALHE PERFIL LONGITUDINAL SEM ESCALA



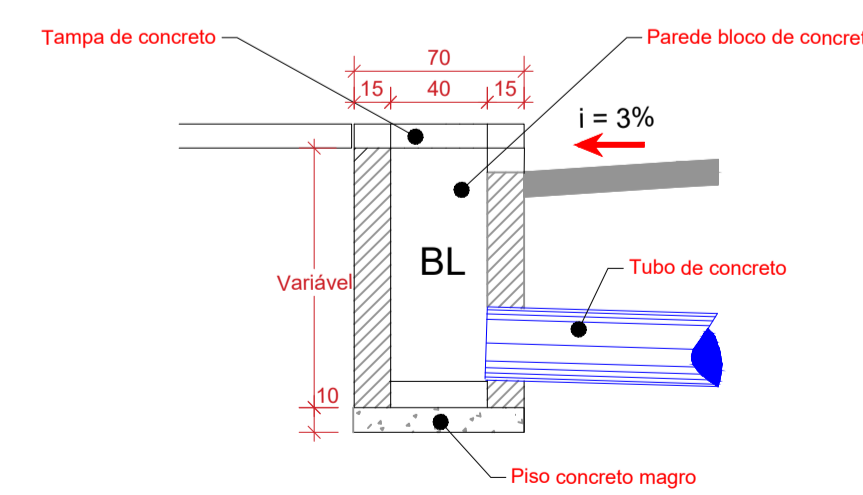
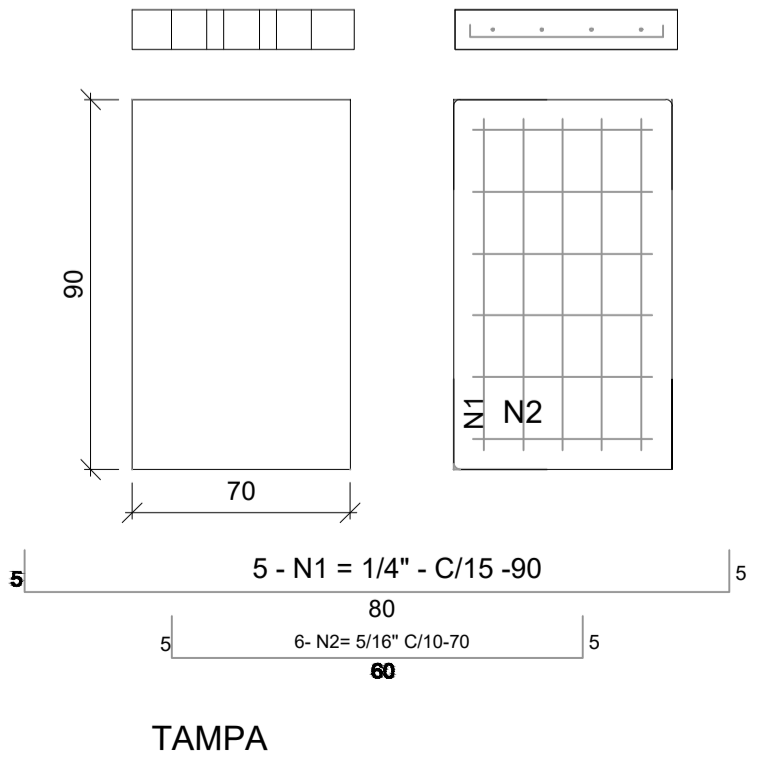
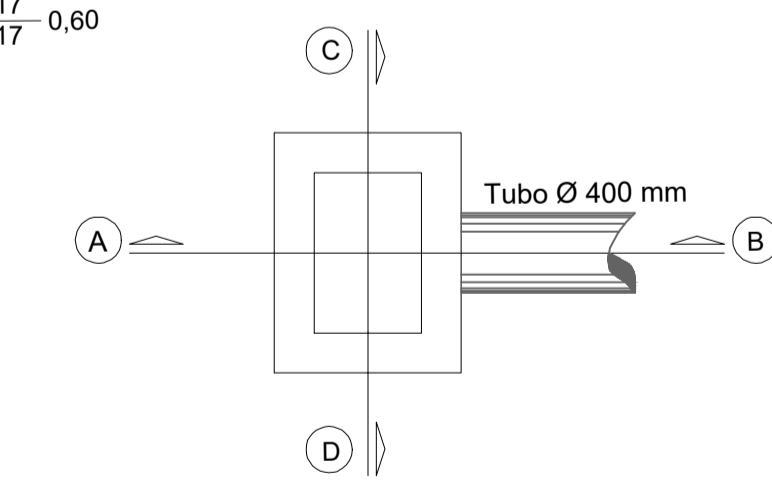
DETALHE DRENAGEM - PLANTA BAIXA SEM ESCALA



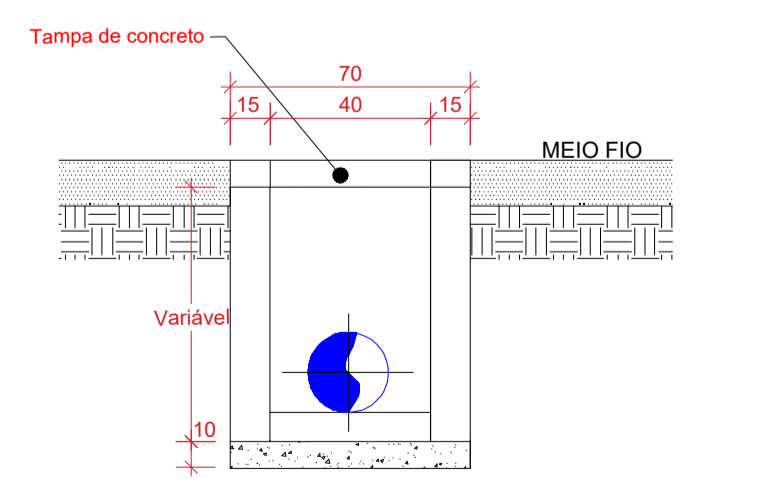
DETALHE DRENAGEM - PERFIL TRANSVERSAL SEM ESCALA



DETALHE DRENAGEM - ESCAVAÇÃO SEM ESCALA



CORTE A-B



CORTE C-D

DETALHE DRENAGEM - CAIXA COLETORA SEM ESCALA

PREFEITURA MUNICIPAL DE PESCARIA BRAVA

Título: PROJETO PAV. RUA ALBINO ANTONIO BORGES E PAULO GONÇALVES VIEIRA

Endereço da Obra: SANTIAGO / PESCARIA BRAVA / SC

Resp. Projeto: ARIELE CORRÊA GUEDES

Resp. Projeto: CÁSSIA GOULART NOGUEIRA

Medidas/Área Total: 1.876,51 m²

Data: 09/11/2023

N ART: INDICADA

Folha: 9037763-2

Escala: INDICADA

CAU: A26/955-9