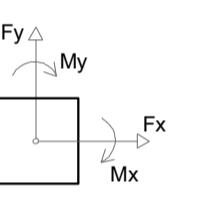
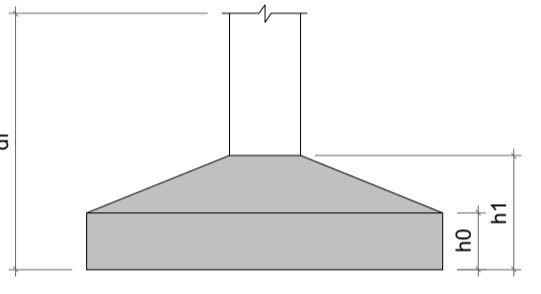


PLANTA DE LOCAÇÃO

Escala 1:50

Nome	Seção (cm)	X (cm)	Y (cm)	Carga Máx. (tf)	Carga Min. (tf)	Pilar		Fundações		Lado B (cm)	Lado H (cm)	h0 / hb (cm)	h1 / hb (cm)	df (cm)				
						Mx Máximo (kgf.m)	My Máximo (kgf.m)	Fx Máximo (tf)	Fy Máximo (tf)									
P1	15x40	79.50	1585.44	8.2	6.6	200	-700	0	-500	0.0	-1.1	0.7	0.0	85	110	30	50	150
P2	15x40	524.50	1585.44	20.8	16.9	500	-200	300	0	0.5	0.0	0.1	-0.2	105	130	20	40	150
P3	15x40	834.50	1585.44	11.1	9.1	300	-400	300	0	0.4	0.0	0.6	0.0	80	105	25	40	150
P4	15x40	1049.50	1585.44	14.1	11.5	300	-300	0	-400	0.0	-0.4	0.5	0.0	90	115	20	40	150
P5	15x40	1364.50	1585.44	7.5	6.0	500	-300	400	0	0.6	0.0	0.3	-0.2	70	95	25	40	150
P6	15x40	79.50	1302.94	40.8	33.2	1000	0	0	-500	0.0	-0.6	0.0	-1.4	150	175	20	45	150
P7	15x40	397.00	1302.94	10.9	8.0	0	-200	1000	0	1.4	0.0	0.4	0.0	85	110	20	40	150
P8	15x40	524.50	1315.44	16.9	12.7	400	-500	0	-400	0.0	-0.6	0.4	0.0	95	120	20	40	150
P9	15x40	834.50	1315.44	21.9	17.2	500	-300	300	0	0.0	-0.2	0.1	-0.2	110	135	20	40	150
P10	15x40	1049.50	1315.44	23.2	18.4	500	-300	0	-300	0.0	-0.6	0.1	-0.2	110	135	20	40	150
P11	15x40	1364.50	1315.44	8.3	5.8	600	-400	400	0	0.7	0.0	0.4	-0.4	75	100	25	40	150
P12	15x40	587.00	1167.94	13.6	10.8	100	-100	200	-700	0.0	-0.7	0.2	0.0	90	115	20	40	150
P13	15x40	949.24	1167.94	19.7	16.0	100	-200	200	-800	0.0	-0.7	0.2	-0.2	105	130	20	40	150
P14	15x40	1364.50	1179.30	22.2	21.3	0	-800	400	0	0.7	0.0	1.5	0.0	120	145	20	40	150
P21	15x40	587.00	746.44	0.8	-4.2	100	-100	300	-400	0.1	-0.1	0.2	0.0	55	80	30	40	150
P22	15x40	749.50	746.44	4.4	1.1	100	-100	300	-600	0.1	-0.5	0.2	0.0	85	110	40	40	150
P23	15x40	961.74	758.94	17.9	15.0	500	-100	0	-400	0.0	-0.5	0.0	-0.4	100	125	20	40	150
P24	15x40	1364.50	758.94	18.0	14.9	1100	0	300	0	0.6	0.0	0.0	-1.4	110	135	20	40	150
P25	15x40	587.00	601.44	47.2	36.6	200	-200	0	-800	0.0	-0.6	0.1	-0.3	165	190	20	50	150
P26	15x40	749.50	601.44	38.5	29.9	100	-200	800	-200	1.1	0.0	0.2	-0.2	145	165	20	45	150
P28	15x40	1364.50	588.94	21.8	17.7	900	0	200	0	0.3	0.0	0.0	-1.1	110	135	20	40	150
P36	15x40	39.50	89.50	29.0	23.8	500	-100	0	-100	0.0	-0.3	0.0	-0.4	125	150	20	40	150
P37	15x40	409.50	89.50	51.4	41.7	0	-700	0	-400	0.0	-0.9	1.1	0.0	170	195	20	55	150
P39	15x40	1364.50	89.50	29.7	24.3	200	-500	100	0	0.2	0.0	0.6	0.0	125	150	20	40	150
P40	15x40	409.50	1155.44	47.7	37.7	1100	0	200	-200	0.3	0.0	0.0	-1.5	165	190	20	50	150
P43	15x40	587.00	998.94	19.5	16.1	200	-200	0	-1100	0.0	-1.4	0.2	-0.1	110	135	20	40	150
P44	15x40	949.24	998.94	20.1	16.1	200	-200	800	0	1.1	0.0	0.2	-0.1	105	130	20	40	150
P55	15x40	92.00	837.94	5.0	4.3	100	-100	0	-1300	0.0	-2.0	0.3	-0.2	95	120	20	40	150
P56	15x40	92.00	1002.94	4.9	4.2	200	-200	0	-1400	0.0	-2.0	0.1	-0.4	95	120	20	40	150
P57	15x40	52.00	522.94	3.5	3.0	0	-800	500	-500	0.6	0.0	1.4	0.0	85	110	20	40	150
P58	15x40	422.00	406.44	5.2	4.1	100	-200	600	-600	0.8	-0.6	0.4	0.0	65	90	25	40	150
P59	15x40	587.00	406.44	7.0	5.6	300	0	0	-1500	0.0	-2.3	0.0	-0.5	110	135	20	40	150
P60	15x40	1364.50	418.94	6.0	5.0	800	-400	700	0	1.3	0.0	0.7	-0.9	80	105	35	50	150
P61	15x40	961.74	588.94	4.6	3.9	1000	-100	0	-400	0.0	-0.6	0.0	-1.3	75	100	40	40	150
P62	15x40	961.74	418.94	11.6	9.6	300	-1000	0	-400	0.0	-0.4	1.5	0.0	90	115	20	40	150
P63	15x40	397.00	837.94	6.4	5.4	100	-300	1000	-200	1.5	0.0	0.3	0.0	75	100	25	40	150
P64	15x40	397.00	1002.87	5.6	4.5	300	0	1100	-300	1.6	0.0	0.1	-0.3	75	100	25	40	150
P65	15x40	969.24	77.00	9.3	8.0	300	0	1000	0	1.7	0.0	0.0	-0.4	85	110	20	40	150
P66	15x40	79.50	535.44	3.4	3.0	700	-500	0	-500	0.0	-0.8	0.3	-0.9	75	90	40	40	150
P67	15x40	397.00	522.94	6.0	5.1	300	0	900	-100	1.4	0.0	0.0	-0.3	75	100	25	40	150

Os esforços indicados nesta tabela são os valores máximos obtidos pela envoltória de todas as combinações definidas para as fundações. Para análises complementares, deve-se consultar o relatório de esforços na fundação, que apresenta os valores calculados para cada combinação.



Localização no eixo X		Localização no eixo Y	
Coordenadas (cm)	Nome	Coordenadas (cm)	Nome
39.50	P36	1585.44	P1, P2, P3, P4, P5
52.00	P57	1315.44	P8, P9, P10, P11
79.50	P1, P6, P66	1302.94	P6, P7
92.00	P56, P55	1179.30	P14
397.00	P7, P64, P63, P67	1167.94	P12, P13
409.50	P40, P37	1155.44	P40
422.00	P58	1002.94	P56
524.50	P2, P8	1002.87	P64
587.00	P12, P43, P21, P25, P59	998.94	P43, P44
749.50	P22, P26	837.94	P56, P63
834.50	P3, P9	758.94	P23, P24
949.24	P13, P44	746.44	P21, P22
961.74	P23	601.44	P25, P26
969.24	P65	588.94	P61, P28
981.74	P61, P62	535.44	P66
1049.50	P4, P10	522.94	P57, P67
1364.50	P5, P11, P14, P24, P28, P60, P39	418.94	P62, P60
		406.44	P58, P59
		89.50	P36, P37, P39
		77.00	P65

**PREFEITURA MUNICIPAL DE PESCARIA BRAVA**

Título  
PROJETO ESTRUTURAL UNIDADE DE SAUDE BASICA BARREIROS

Referência  
Conteúdo

UNIDADE BASICA DE SAUDE BARREIROS

Endereço da Obra  
RODOVIA SC 437, BARREIROS / PESCARIA BRAVA/SC

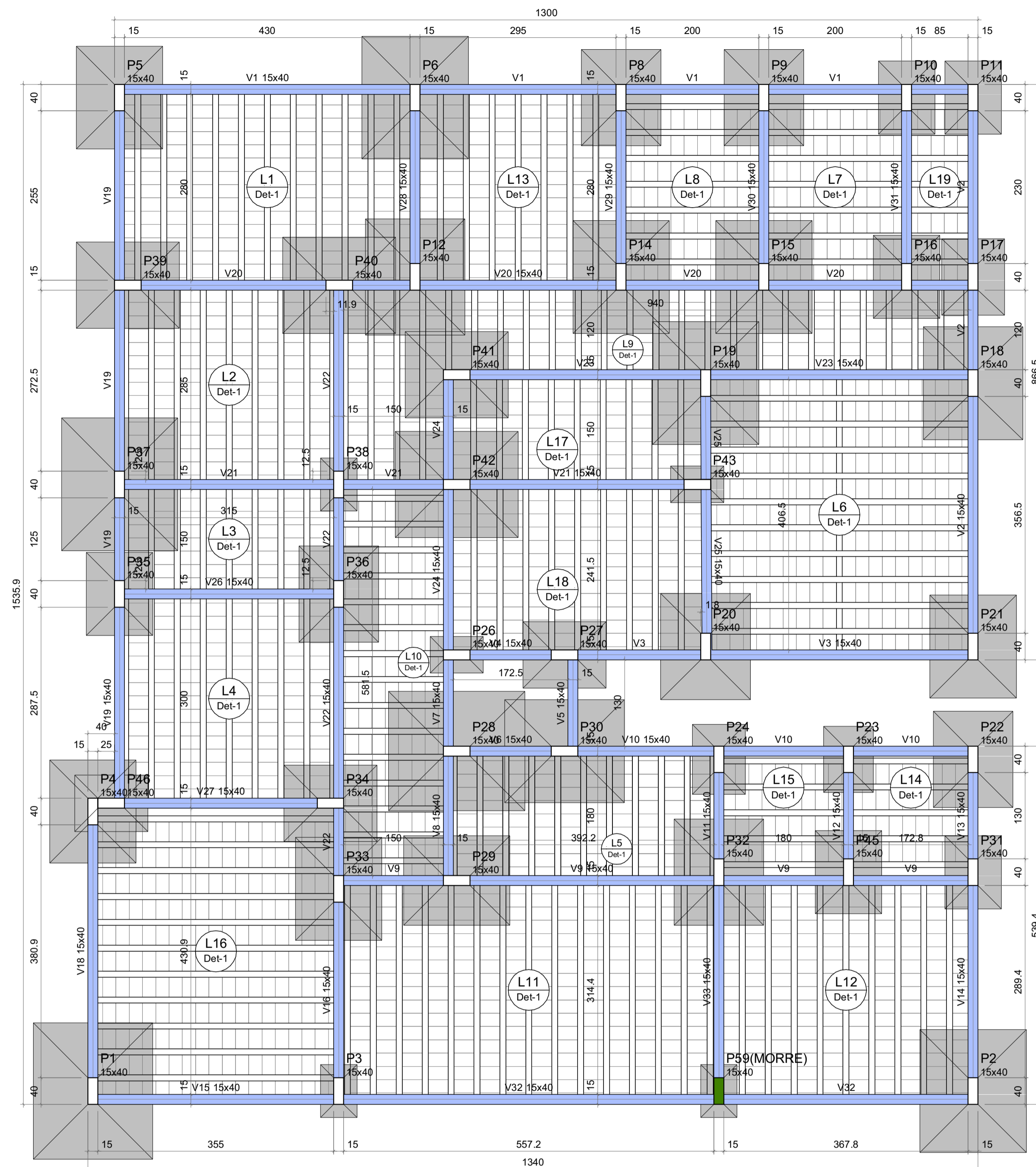
Resp. Projeto  
Medidas/Área Total

Data  
Escala  
03/04/2022  
INDICADA

Resp. Projeto  
N ART  
Folha



CÁSSIA GOULART NOGUEIRA  
ARQUITETA E URBANISTA - CAU: A260955-0



### FORMA DO PAVIMENTO TERREO (NÍVEL 0)

Escala 1:50

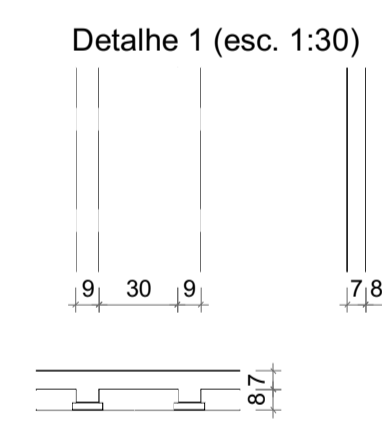
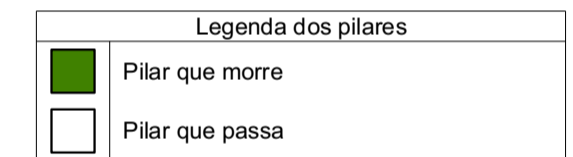
Características dos materiais

fck (kgf/cm²)	Ecs (kgf/cm²)
250	241500

Dimensão máxima do agregado = 19 mm

Pilares

Nome	Seção (cm)	Elevação (cm)	Nível (cm)
P1	15x40	0	0
P2	15x40	0	0
P3	15x40	0	0
P4	15x40	0	0
P5	15x40	0	0
P6	15x40	0	0
P8	15x40	0	0
P9	15x40	0	0
P10	15x40	0	0
P11	15x40	0	0
P12	15x40	0	0
P14	15x40	0	0
P15	15x40	0	0
P16	15x40	0	0
P17	15x40	0	0
P18	15x40	0	0
P19	15x40	0	0
P20	15x40	0	0
P21	15x40	0	0
P22	15x40	0	0
P23	15x40	0	0
P24	15x40	0	0
P26	15x40	0	0
P27	15x40	0	0
P28	15x40	0	0
P29	15x40	0	0
P30	15x40	0	0
P31	15x40	0	0
P32	15x40	0	0
P33	15x40	0	0
P34	15x40	0	0
P35	15x40	0	0
P36	15x40	0	0
P37	15x40	0	0
P38	15x40	0	0
P39	15x40	0	0
P40	15x40	0	0
P41	15x40	0	0
P42	15x40	0	0
P43	15x40	0	0
P45	15x40	0	0
P46	15x40	0	0
P59	15x40	0	0



Blocos de enchimento

Detalhe	Tipo	Nome	Dimensões(cm)			Quantidade
			hb	bx	by	
1	Lajota cerâmica	B8/30/20	8	30	20	2078

Vigas

Nome	Seção (cm)	Elevação (cm)	Nível (cm)
V1	15x40	0	0
V2	15x40	0	0
V3	15x40	0	0
V4	15x40	0	0
V5	15x40	0	0
V6	15x40	0	0
V7	15x40	0	0
V8	15x40	0	0
V9	15x40	0	0
V10	15x40	0	0
V11	15x40	0	0
V12	15x40	0	0
V13	15x40	0	0
V14	15x40	0	0
V15	15x40	0	0
V16	15x40	0	0
V18	15x40	0	0
V19	15x40	0	0
V20	15x40	0	0
V21	15x40	0	0
V22	15x40	0	0
V23	15x40	0	0
V24	15x40	0	0
V25	15x40	0	0
V26	15x40	0	0
V27	15x40	0	0
V28	15x40	0	0
V29	15x40	0	0
V30	15x40	0	0
V31	15x40	0	0
V32	15x40	0	0
V33	15x40	0	0

Lajes

Nome	Tipo	Altura (cm)	Dados			Sobrecarga (kgf/m²)		
			Elevação (cm)	Nível (cm)	Peso próprio (kgf/m²)	Adicional	Acidental	Localizada
L1	Treliçada 1D	15	0	0	332	154	200	-
L2	Treliçada 1D	15	0	0	332	154	200	-
L3	Treliçada 1D	15	0	0	332	154	200	-
L4	Treliçada 1D	15	0	0	332	154	200	-
L5	Treliçada 1D	15	0	0	332	154	200	-
L6	Treliçada 1D	15	0	0	333	154	200	-
L7	Treliçada 1D	15	0	0	332	154	200	-
L8	Treliçada 1D	15	0	0	332	154	200	-
L9	Treliçada 1D	15	0	0	332	154	300	-
L10	Treliçada 1D	15	0	0	332	154	300	-
L11	Treliçada 1D	15	0	0	332	154	2000	-
L12	Treliçada 1D	15	0	0	332	154	2000	-
L13	Treliçada 1D	15	0	0	332	182	200	-
L14	Treliçada 1D	15	0	0	332	182	200	-
L15	Treliçada 1D	15	0	0	332	182	200	-
L16	Treliçada 1D	15	0	0	332	154	2000	-
L17	Treliçada 1D	15	0	0	332	154	2000	-
L18	Treliçada 1D	15	0	0	332	154	2000	-
L19	Treliçada 1D	15	0	0	332	154	2000	-

Características dos materiais

fck (kgf/cm²)	Ecs (kgf/cm²)
250	241500

Dimensão máxima do agregado = 19 mm

## PREFEITURA MUNICIPAL DE PESCARIA BRAVA

Título  
**PROJETO ESTRUTURAL UNIDADE DE SAUDE BASICA BARREIROS**

Referência  
 Conteúdo

UNIDADE BASICA DE SAUDE BARREIROS

Endereço da Obra  
 RODOVIA SC 437, BARREIROS / PESCARIA BRAVA/SC

Resp. Projeto  
 Medidas/Área Total

Data  
 Escala

03/04/2022  
 INDICADA

Resp. Projeto  
 N ART  
 Folha

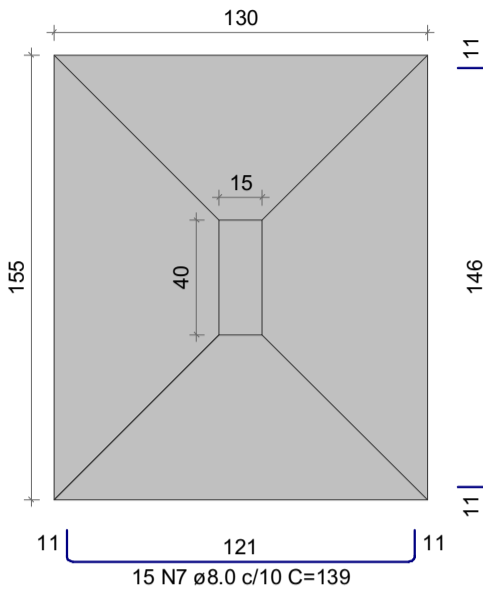
02

11

**CÁSSIA GOULART NOGUEIRA**  
 ARQUITETA E URBANISTA - CAU: A260955-0

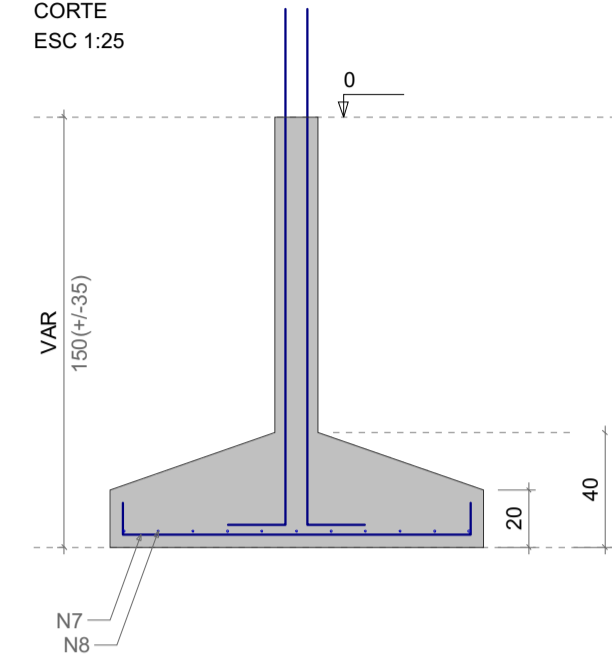


S4=S21=S33=S39=S41  
PLANTA  
ESC 1:25

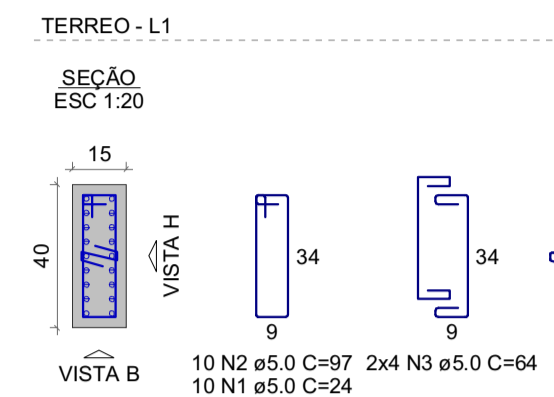


Solo com capacidade de suporte > 2.00 kgf/cm<sup>2</sup>  
Solo compactado sobre a sapata  
peso específico > 1600.00 kgf/m<sup>3</sup>

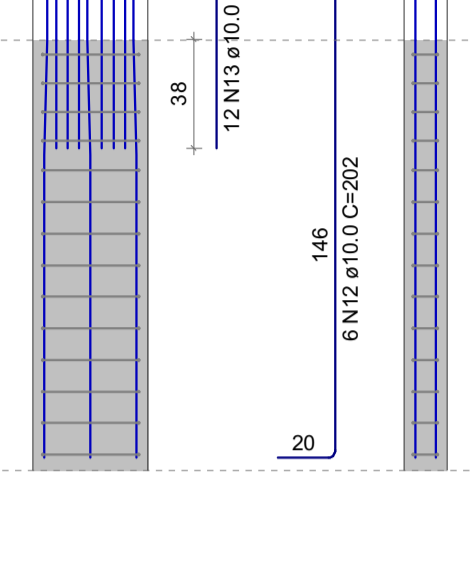
CORTE  
ESC 1:25



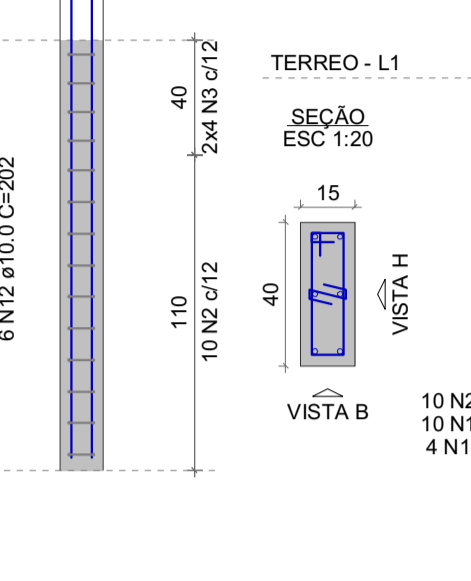
P21



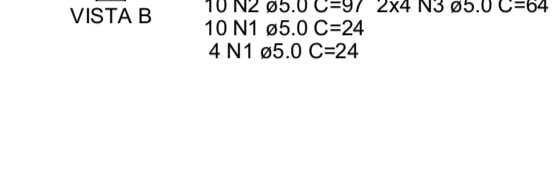
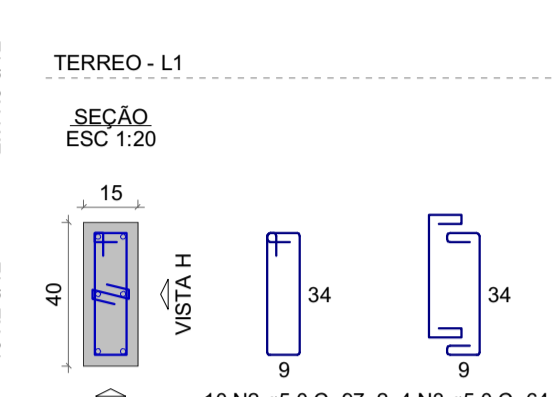
VISTA H  
ESC 1:25



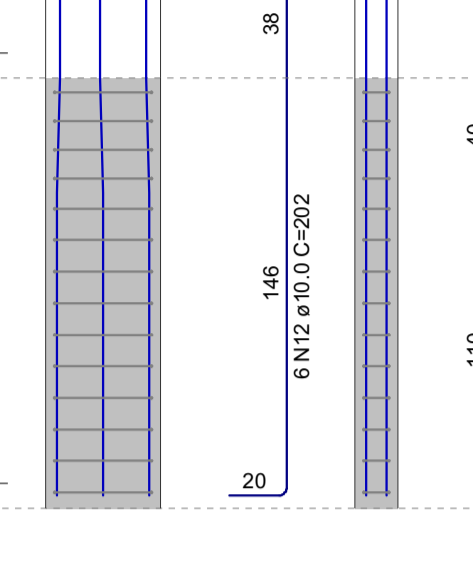
VISTA B  
ESC 1:25



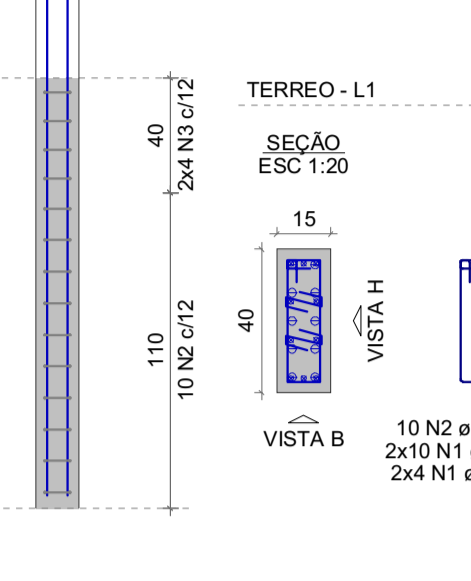
P33=P39=P41



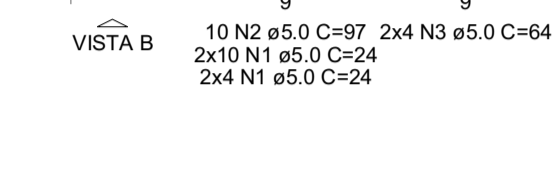
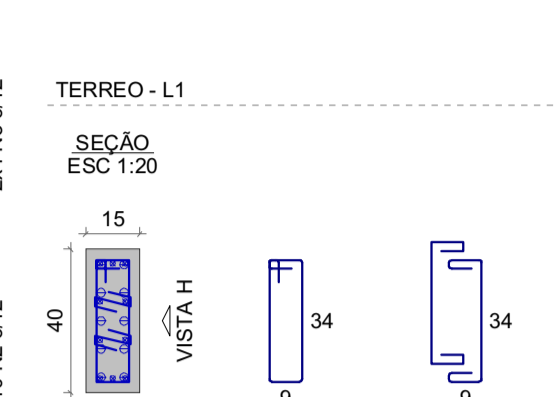
VISTA H  
ESC 1:25



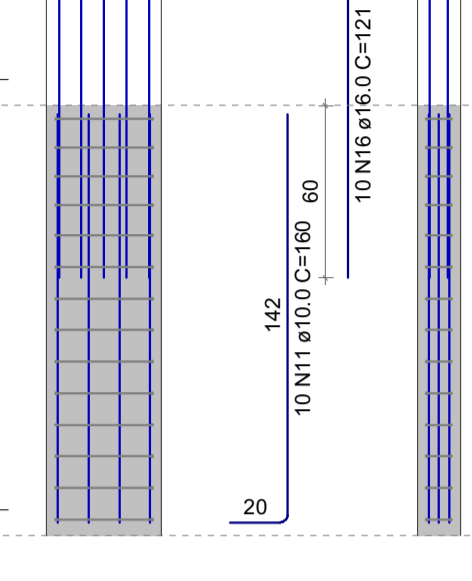
VISTA B  
ESC 1:25



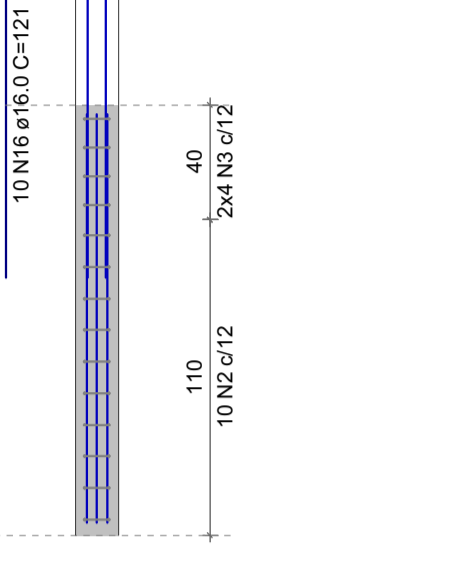
P4



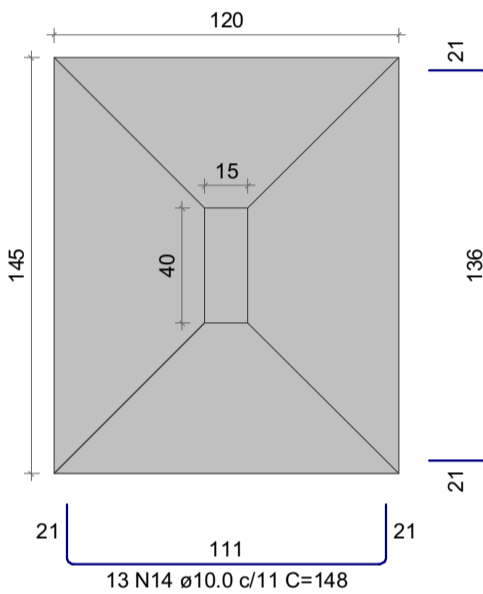
VISTA H  
ESC 1:25



VISTA B  
ESC 1:25

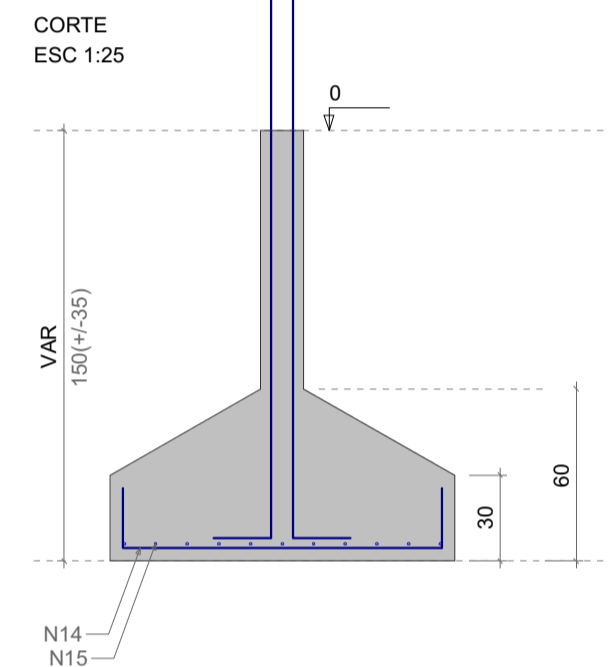


S5=S36  
PLANTA  
ESC 1:25

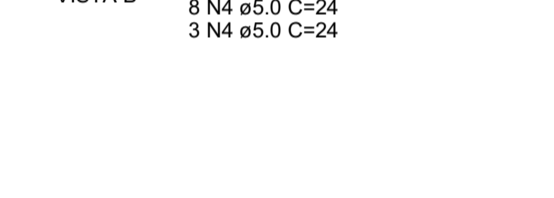
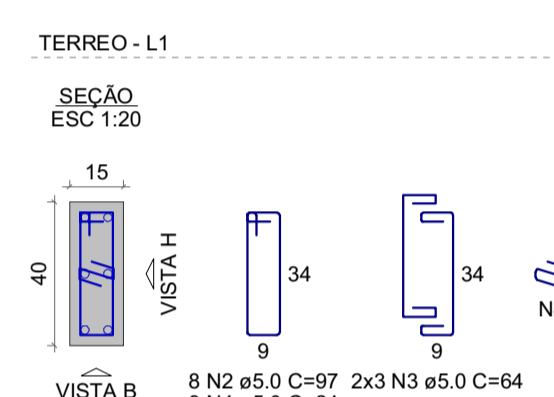


Solo com capacidade de suporte > 2.00 kgf/cm<sup>2</sup>  
Solo compactado sobre a sapata  
peso específico > 1600.00 kgf/m<sup>3</sup>

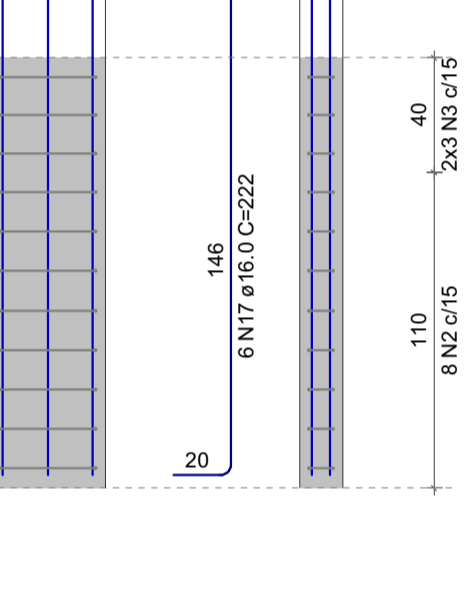
CORTE  
ESC 1:25



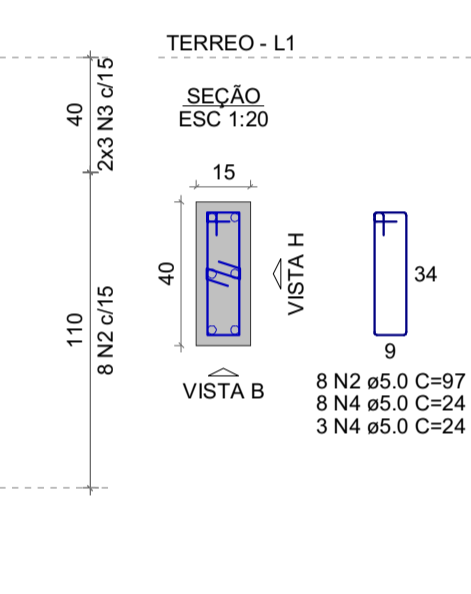
P36



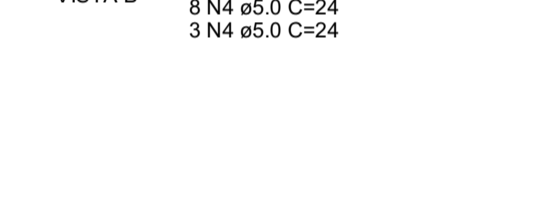
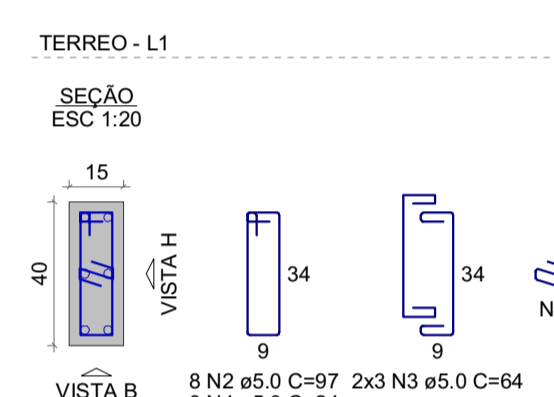
VISTA H  
ESC 1:25



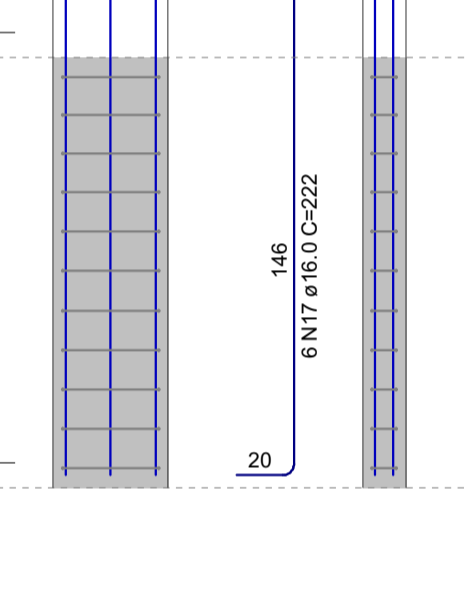
VISTA B  
ESC 1:25



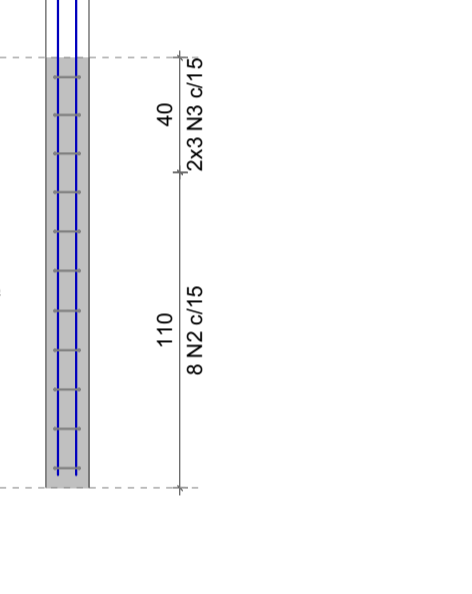
P5



VISTA H  
ESC 1:25



VISTA B  
ESC 1:25



RELAÇÃO DO AÇO

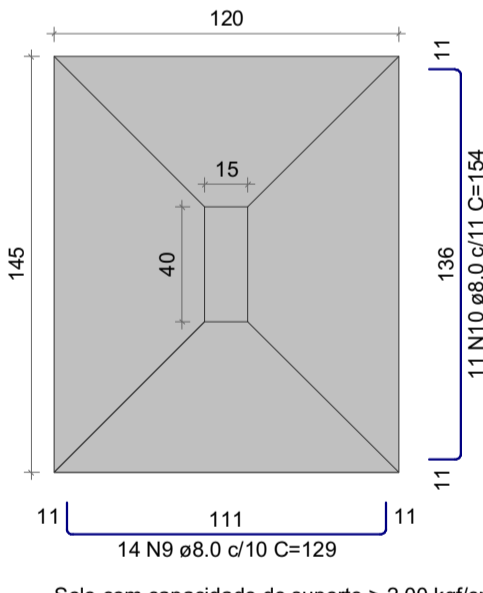
AÇO	N	DIAM (mm)	QUANT	C.UNIT (cm)	C.TOTAL (cm)
CA60	1	5.0	168	24	4032
	2	5.0	126	97	12222
	3	5.0	100	64	6400
CA50	4	5.0	22	24	528
	5	8.0	33	94	3102
	6	8.0	21	119	2499
	7	8.0	75	139	10425
	8	8.0	55	164	9020
	9	8.0	42	129	5418
	10	8.0	33	154	5082
	11	10.0	10	160	1600
	12	10.0	60	202	12120
	13	10.0	16	75	1200
	14	10.0	26	148	3848
	15	10.0	22	173	3806
	16	16.0	10	121	1910
	17	16.0	12	222	2664

RESUMO DO AÇO

AÇO	DIAM (mm)	C.TOTAL (m)	PESO + 10% (kg)
CA50	8.0	355.5	154.3
	10.0	257.7	153.1
	16.0	38.7	67.3
CA60	5.0	231.8	39.3
PESO TOTAL (kg)			
CA50		374.6	
CA60		39.3	

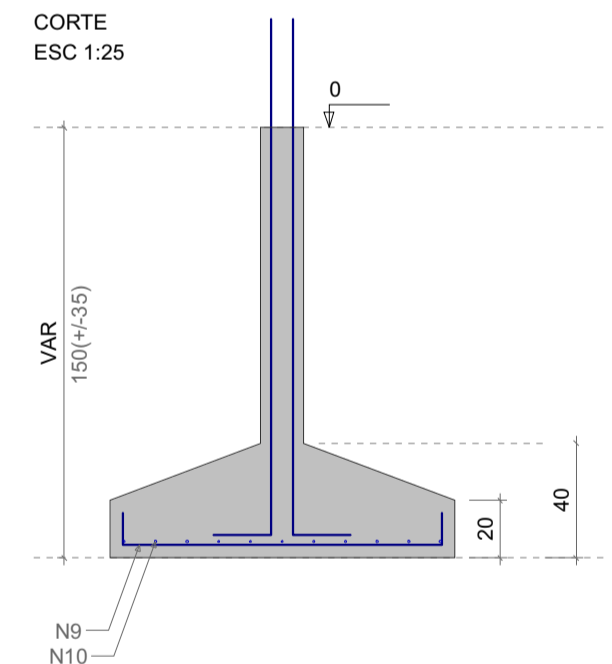
Volume de concreto (C-25) = 7.40 m<sup>3</sup>  
Área de forma = 29.69 m<sup>2</sup>

S8=S9=S22  
PLANTA  
ESC 1:25

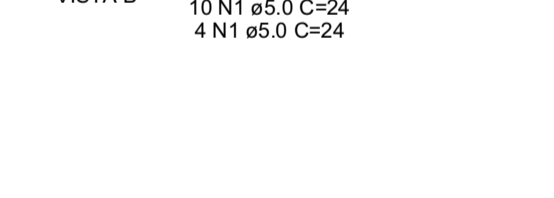
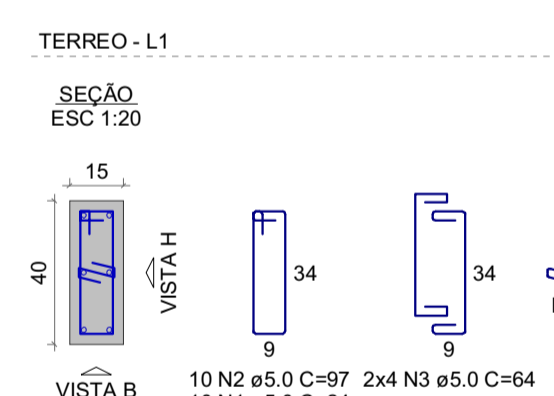


Solo com capacidade de suporte > 2.00 kgf/cm<sup>2</sup>  
Solo compactado sobre a sapata  
peso específico > 1600.00 kgf/m<sup>3</sup>

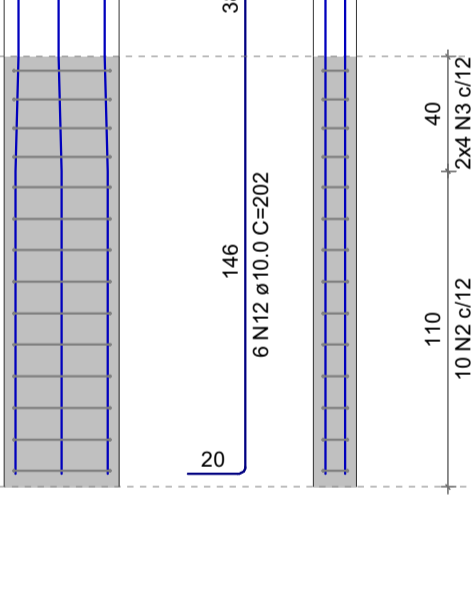
CORTE  
ESC 1:25



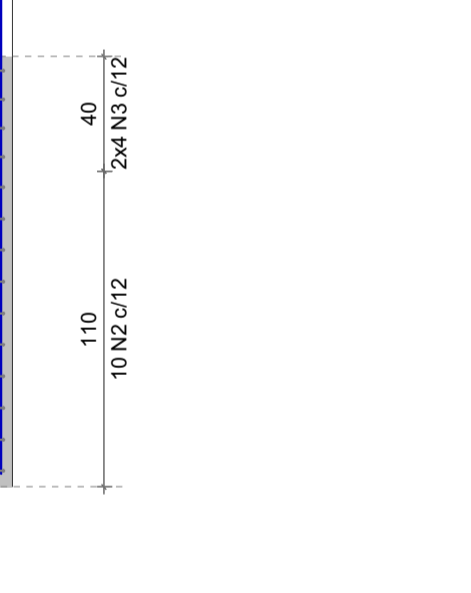
P8=P9=P22



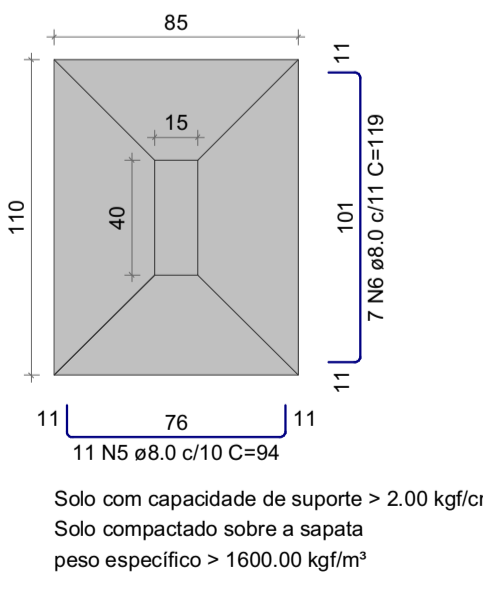
VISTA H  
ESC 1:25



VISTA B  
ESC 1:25

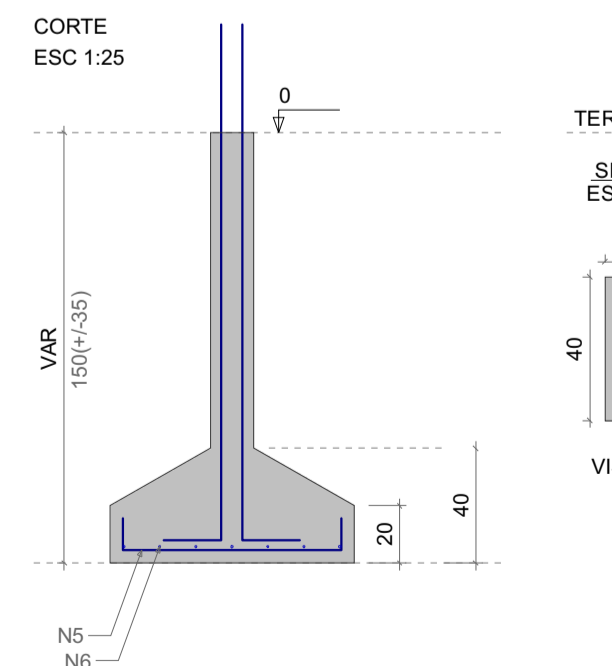


S10=S11=S46  
PLANTA  
ESC 1:25

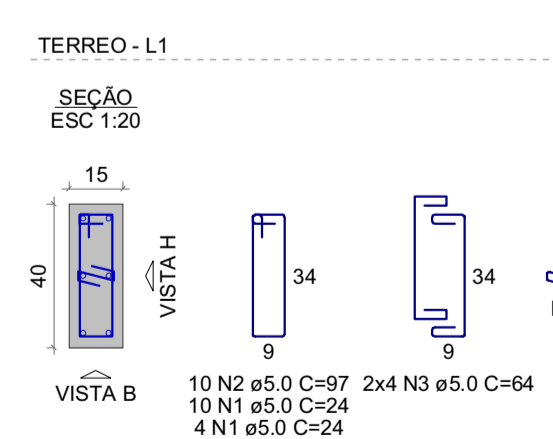


Solo com capacidade de suporte > 2.00 kgf/cm<sup>2</sup>  
Solo compactado sobre a sapata  
peso específico > 1600.00 kgf/m<sup>3</sup>

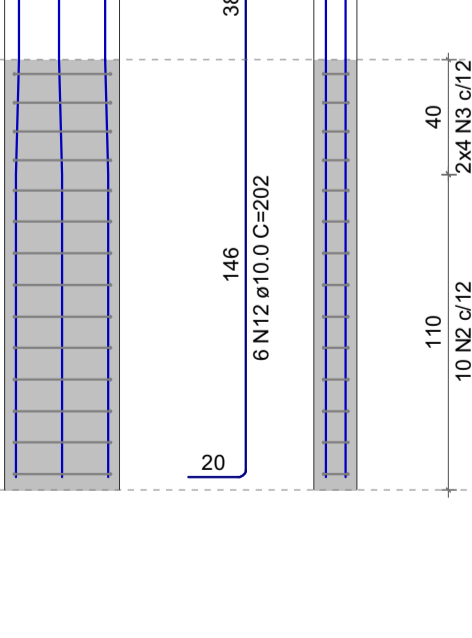
CORTE  
ESC 1:25



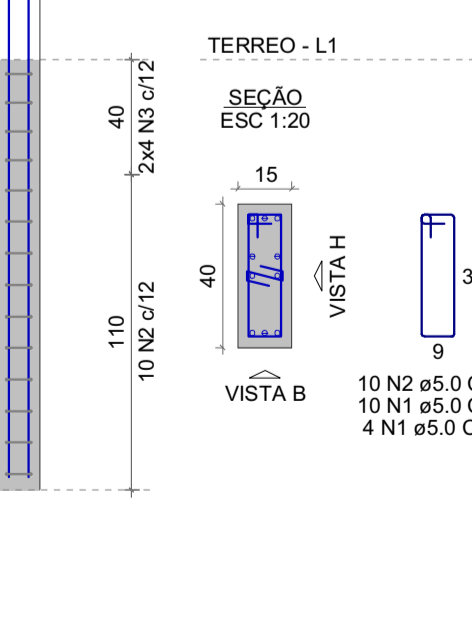
P10=P11



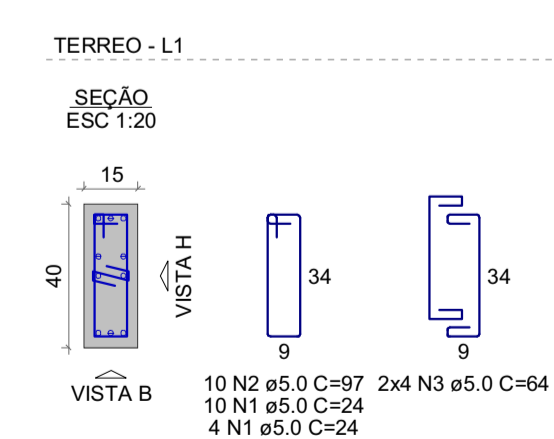
VISTA H  
ESC 1:25



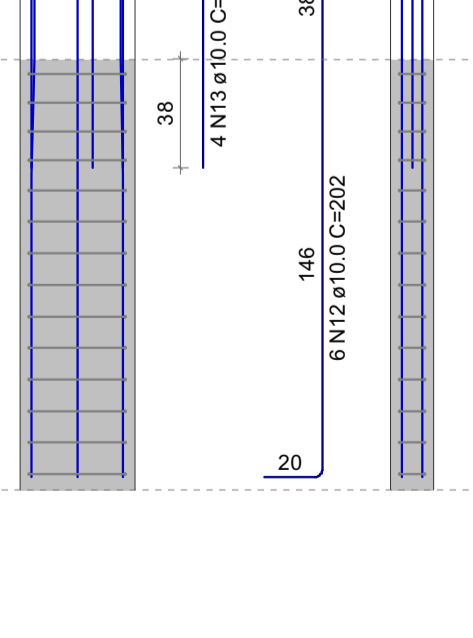
VISTA B  
ESC 1:25



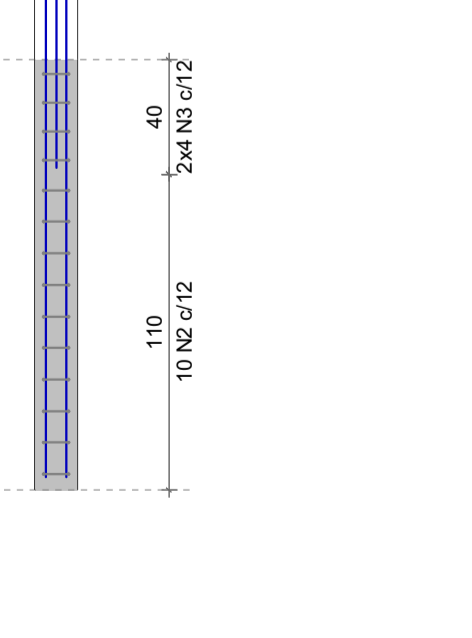
P46



VISTA H  
ESC 1:25



VISTA B  
ESC 1:25



# PREFEITURA MUNICIPAL DE PESCARIA BRAVA

Título  
PROJETO ESTRUTURAL UNIDADE DE SAUDE BASICA BARREIROS

Referência  
Conteúdo

UNIDADE BASICA DE SAUDE BARREIROS

Endereço da Obra  
RODOVIA SC 437, BARREIROS / PESCARIA BRAVA/SC

Resp. Projeto  
Medidas/Área Total

ARIELE CORRÊA GUEDES  
ENGENHEIRA CIVIL - CREA:157268-0

Resp. Projeto

Data  
03/04/2022

Escala  
INDICADA

N ART

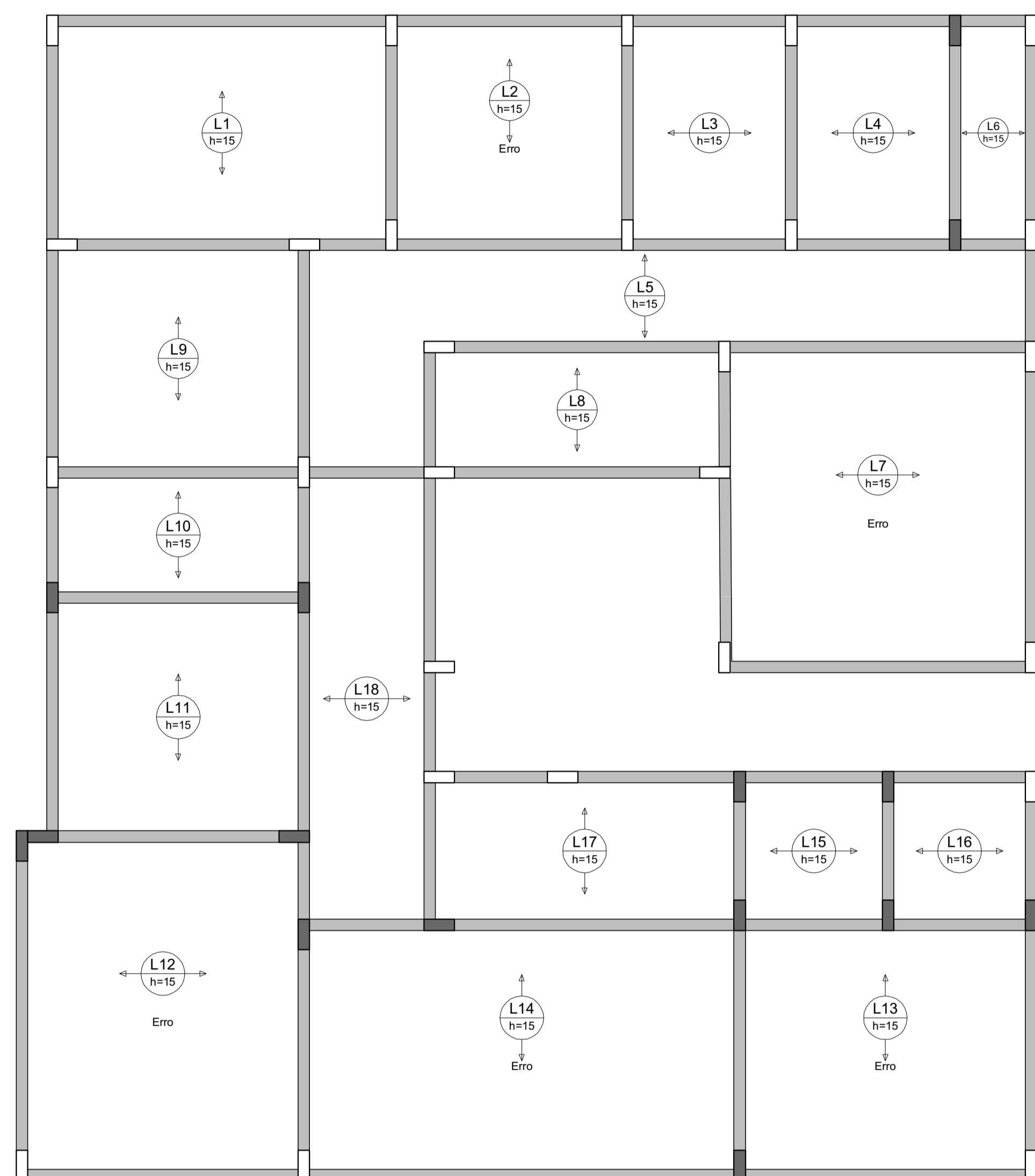
Folha



CÁSSIA GOULART NOGUEIRA  
ARQUITETA E URBANISTA - CAU: A260955-0

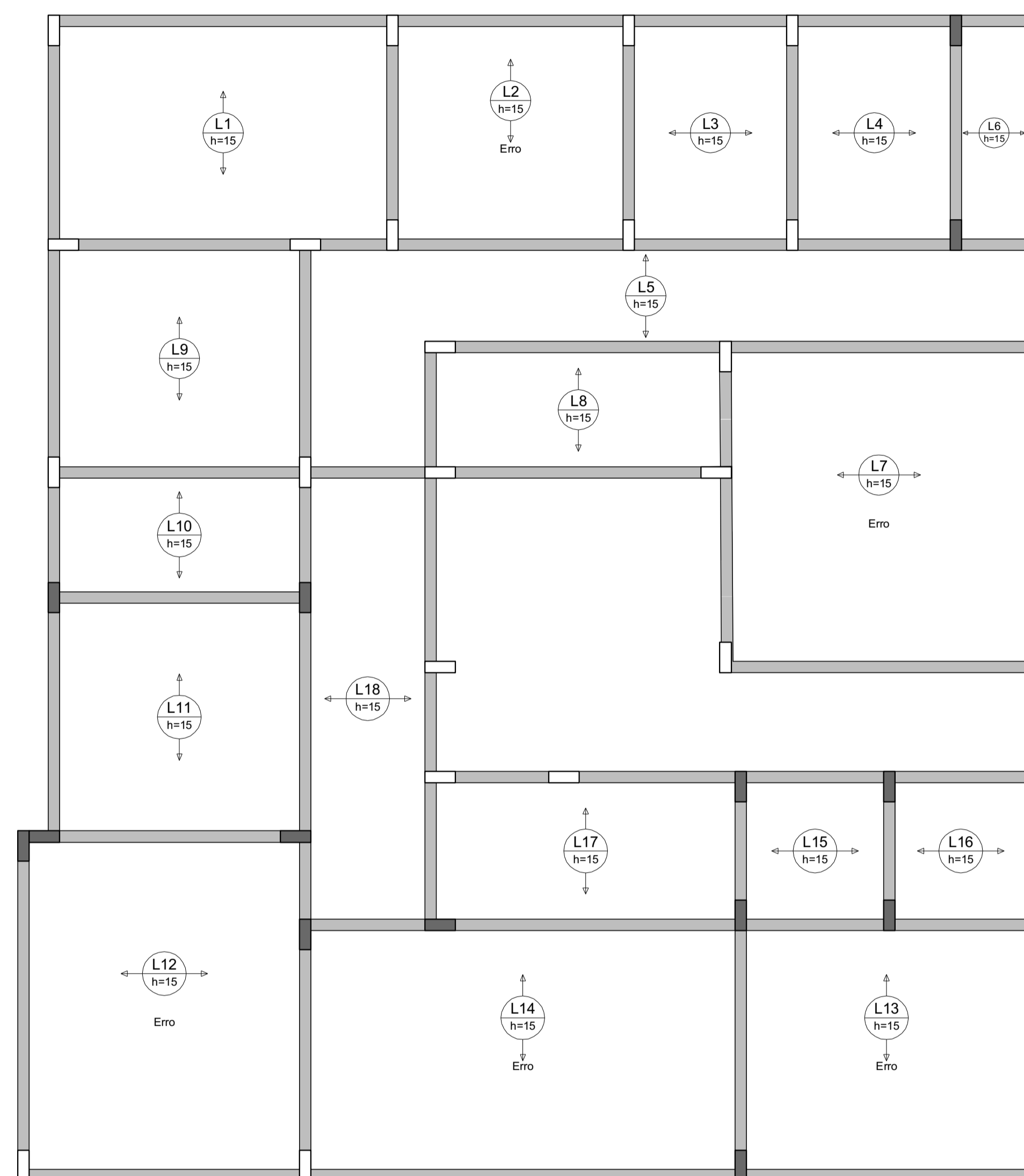
03

11



ARMAÇÃO POSITIVA DAS LAJES DO PAVIMENTO 1 PAVIMENTO (EIXO X)

Escala 1:50



ARMAÇÃO POSITIVA DAS LAJES DO PAVIMENTO 1 PAVIMENTO (EIXO Y)

Escala 1:50

RELAÇÃO DO AÇO  
Positivos X  
Volume de concreto (C-25) = 12.89 m³  
Área de forma = 0.00 m²

**PREFEITURA MUNICIPAL  
DE PESCARIA BRAVA**

Título  
PROJETO ESTRUTURAL UNIDADE DE SAUDE BASICA BARREIROS

Referência Conteúdo

UNIDADE BASICA DE SAUDE BARREIROS

Endereço da Obra  
RODOVIA SC 437, BARREIROS / PESCARIA BRAVA/SC

Resp. Projeto Medidas/Área Total

ARIELE CORRÊA GUEDES  
ENGENHEIRA CIVIL - CREA:157268-0

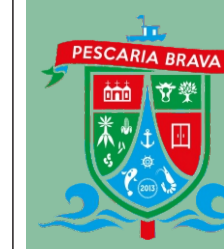
Resp. Projeto

Data Escala

03/04/2022 INDICADA

N ART Folha

CÁSSIA GOULART NOGUEIRA  
ARQUITETA E URBANISTA - CAU: A260955-0







RELAÇÃO DO AÇO

AÇO	N	DIAM (mm)	QUANT	C.UNIT (cm)	C.TOTAL (cm)
CA60	1	5.0	477	97	46269
CA50	2	6.3	14	127	1778
	3	6.3	77	539	4139
	4	6.3	87	98	8526
	5	8.0	4	363	1452
	6	8.0	1	135	135
	7	8.0	2	411	822
	8	8.0	2	437	874
	9	8.0	2	152	304
	10	8.0	3	157	471
	11	8.0	1	225	225
	12	8.0	2	229	458
	13	8.0	8	197	1576
	14	8.0	2	162	324
	15	8.0	2	204	408
	16	8.0	1	167	167
	17	8.0	4	220	880
	18	8.0	2	254	508
	19	8.0	2	180	360
	20	8.0	1	203	203
	21	8.0	2	398	796
	22	8.0	2	155	310
	23	8.0	2	653	1306
	24	8.0	4	172	688
	25	8.0	2	172	344
	26	8.0	1	176	176
	27	8.0	2	663	1326
	28	8.0	4	204	816
	29	8.0	3	247	741
	30	8.0	1	164	164
	31	8.0	1	251	251
	32	8.0	3	228	684
	33	8.0	2	132	264
	34	8.0	2	388	776
	35	8.0	2	395	790
	36	8.0	3	177	531
	37	8.0	3	222	666
	38	8.0	2	431	862
	39	8.0	3	354	1062
	40	8.0	1	167	167
	41	8.0	2	530	1060
	42	8.0	2	302	604
	43	8.0	1	170	170
	44	8.0	1	215	215
	45	8.0	1	570	570
	46	8.0	1	550	550
	47	8.0	2	1109	2218
	48	8.0	2	164	328
	49	8.0	2	545	1090
	50	8.0	1	160	160
	51	8.0	2	262	524
	52	8.0	2	330	660
	53	8.0	2	342	684
	54	8.0	1	345	345
	55	8.0	1	417	417
	56	8.0	2	907	1814
	57	10.0	1	163	163
	58	10.0	1	218	218
	59	10.0	2	340	680
	60	10.0	1	175	175
	61	10.0	3	315	945
	62	12.5	1	212	212
	63	12.5	2	418	836
	64	12.5	2	221	442
	65	12.5	1	287	287
	66	12.5	3	382	1146
	67	12.5	1	270	270
	68	16.0	1	220	220
	69	16.0	2	399	798
	70	16.0	2	381	762
	71	16.0	2	470	940
	72	16.0	1	159	159
	73	16.0	1	484	484
	74	16.0	1	909	909
	75	16.0	2	1079	2158
	76	16.0	1	255	255
	77	16.0	2	991	1982
	78	20.0	1	231	231
	79	20.0	2	778	1556
	80	20.0	1	695	695
	81	20.0	2	899	1798
	82	20.0	2	248	496
	83	20.0	2	426	852
	84	20.0	2	254	508
	85	20.0	2	574	1148

RESUMO DO AÇO

AÇO	DIAM (mm)	C.TOTAL (m)	PESO + 10% (kg)
CA50	6.3	108.4	29.2
	8.0	341.1	148.1
	10.0	21.8	14.8
	12.5	31.9	33.8
	16.0	86.7	150.5
	20.0	70.4	190.9
	8.0	462.7	78.4
CA60			
PESO TOTAL (kg)			
CA50	567.2		
CA60	78.4		

Volume de concreto (C-25) = 4.52 m³  
Área de forma = 55.41 m²

**PREFEITURA MUNICIPAL DE PESCARIA BRAVA**

Título: PROJETO ESTRUTURAL UNIDADE DE SAUDE BASICA BARREIROS

Referência: Conteúdo

Endereço da Obra: UNIDADE BASICA DE SAUDE BARREIROS

RODOVIA SC 437, BARREIROS / PESCARIA BRAVA/SC

Resp. Projeto: Medidas/Área Total

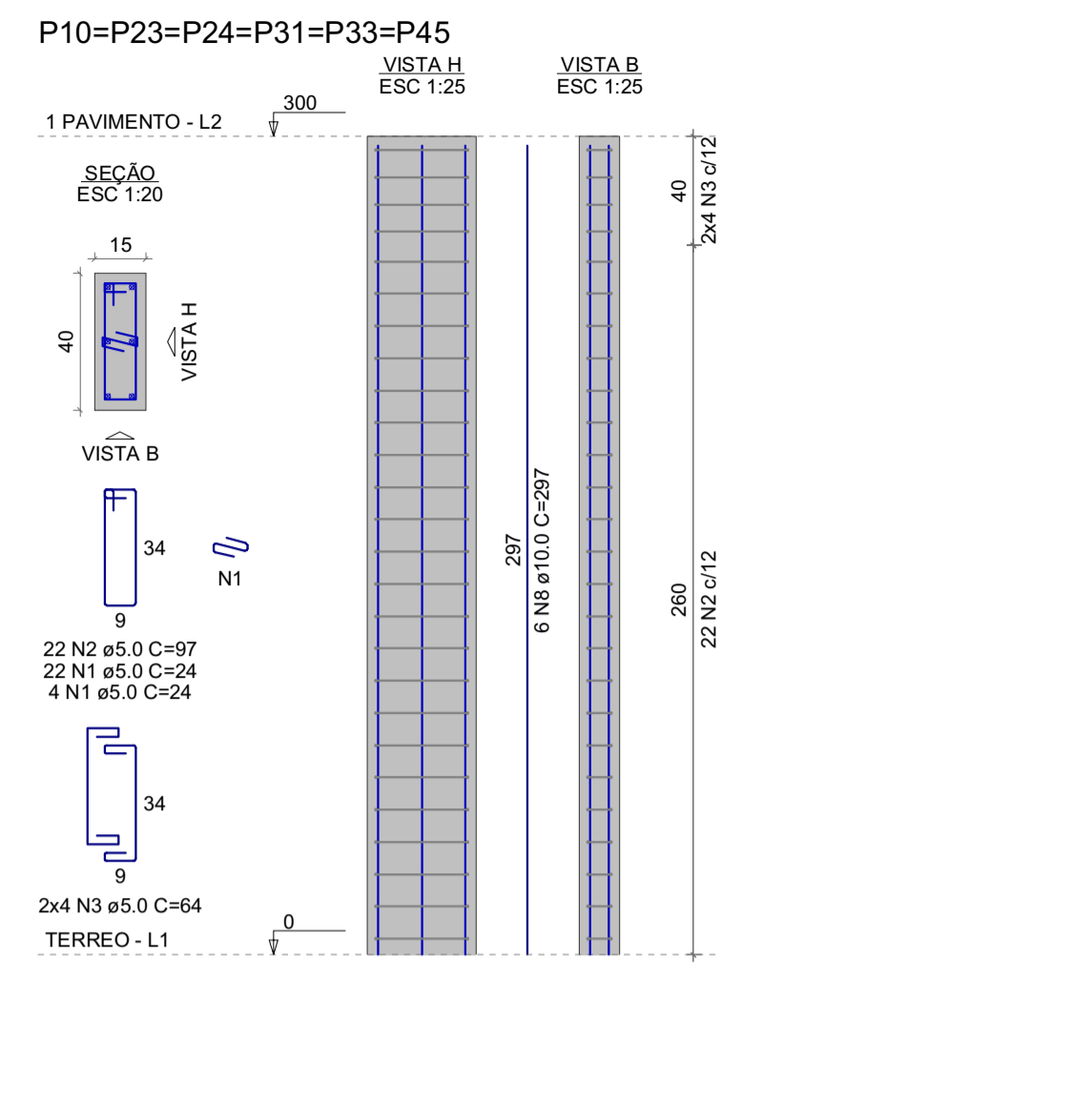
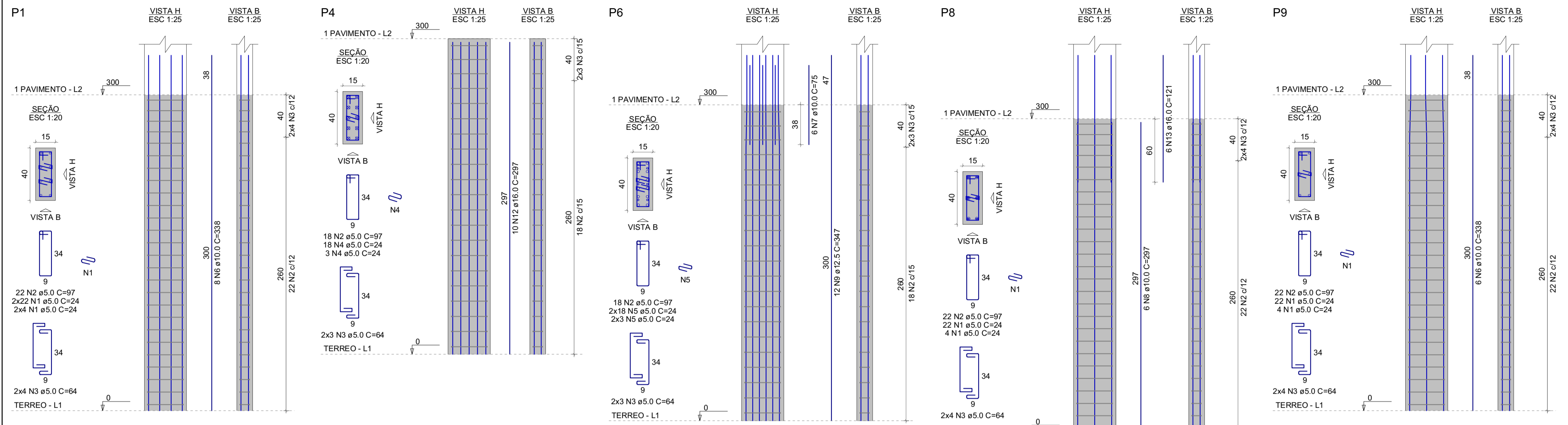
Resp. Projeto: ARIELE CORRÊA GUEDES ENGENHEIRA CIVIL - CREA:157268-0

Resp. Projeto: CÁSSIA GOULART NOGUEIRA ARQUITETA E URBANISTA - CAU: A209955-0

Data: 03/04/2022

Escala: INDICADA

Folha: 05



**RELAÇÃO DO AÇO**

AÇO	N	DIAM (mm)	QUANT	C.LIMIT (cm)	C.TOTAL (cm)
CA60	1	5.0	650	24	16600
	2	5.0	512	97	49664
	3	5.0	184	64	11776
	4	5.0	21	24	504
	5	5.0	84	24	2016
	6	10.0	88	338	28744
	7	10.0	34	75	2550
	8	10.0	64	297	19008
	9	12.5	24	347	8328
	10	12.5	4	94	3008
	11	12.5	4	297	1188
	12	16.0	10	297	2970
	13	16.0	6	121	726

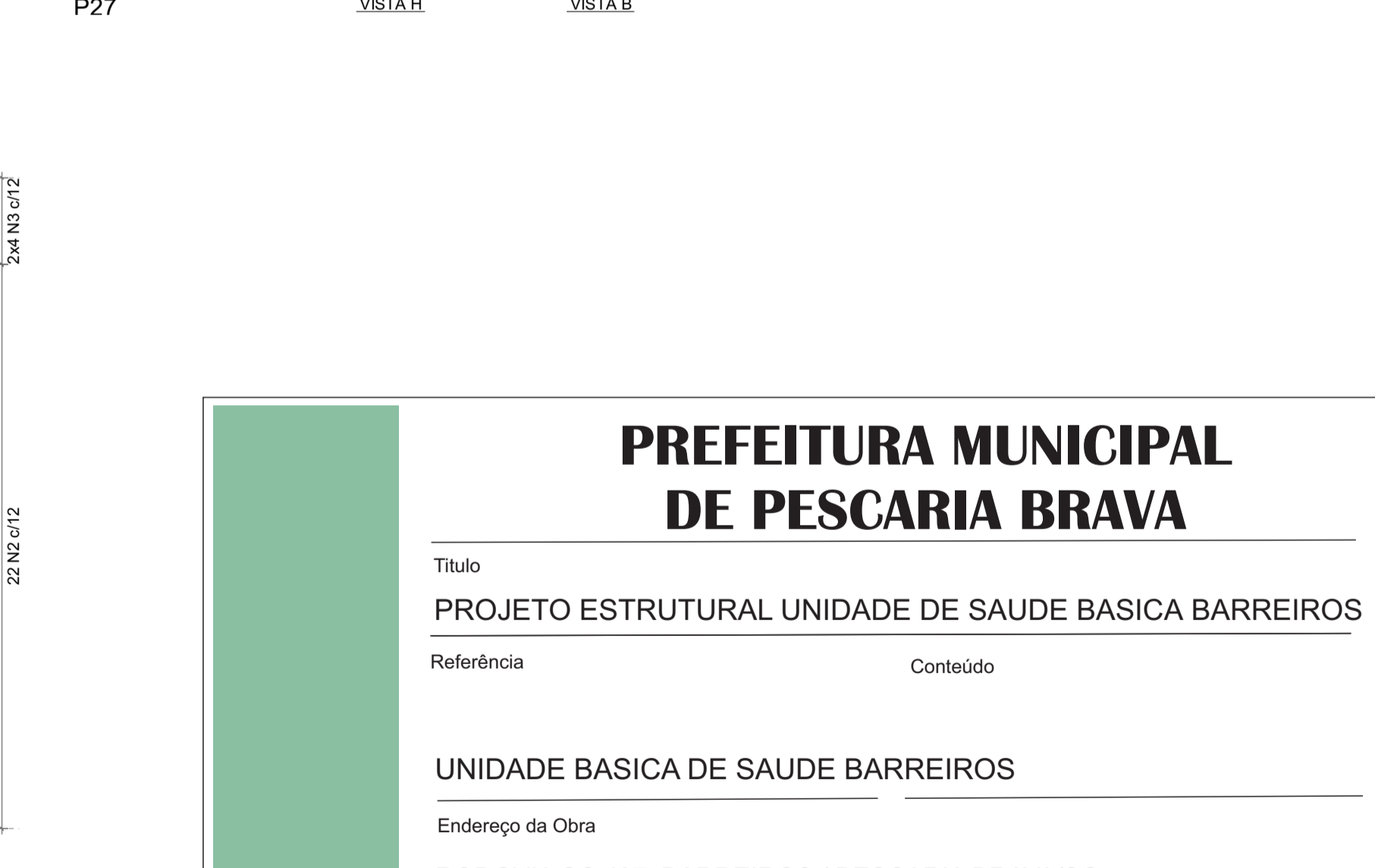
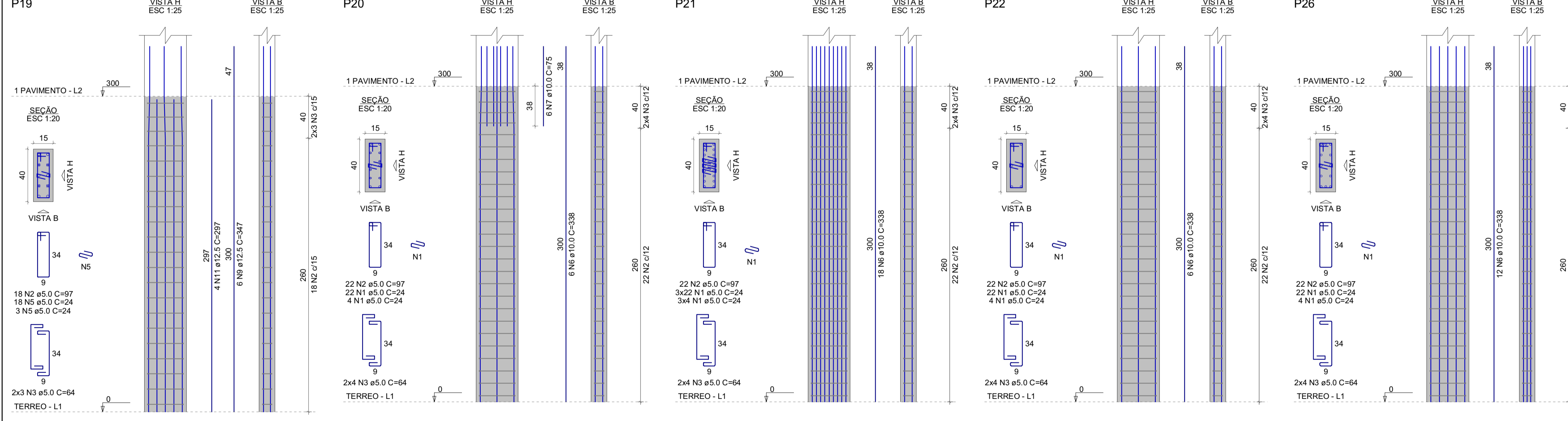
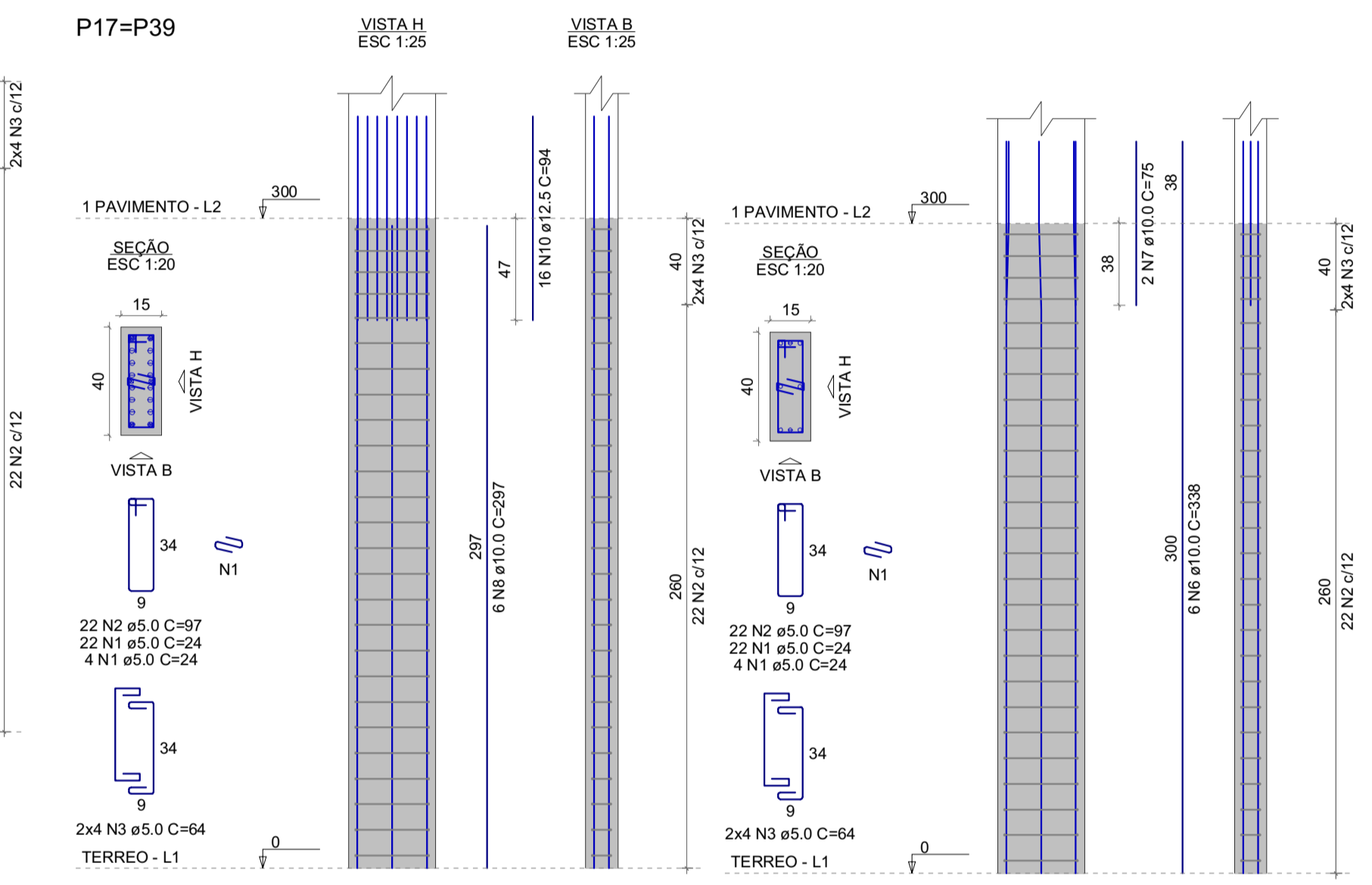
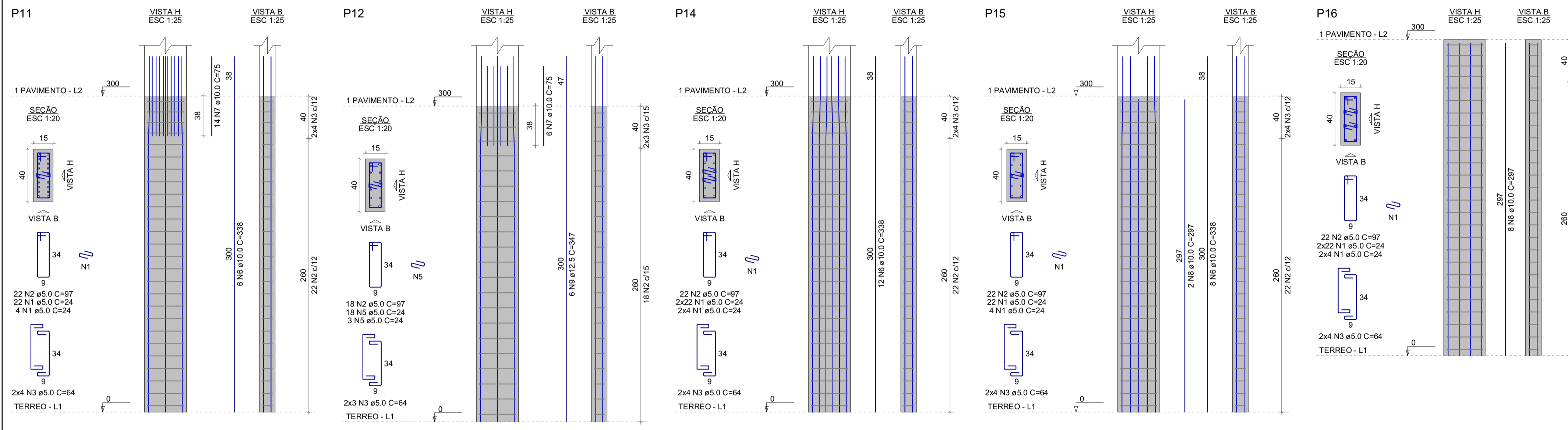
  

**RESUMO DO AÇO**

AÇO	DIAM (mm)	C.TOTAL (m)	PESO + 10% (kg)
CA50	10.0	513	347.9
	12.5	125.2	132.7
	16.0	37	64.2
CA60	5.0	795.6	134.9

**PESO TOTAL (kg)**  
 CA50 544.8  
 CA60 134.8

Volume de concreto (C-25) = 4.32 m³  
 Área de forma = 79.20 m²



## PREFEITURA MUNICIPAL DE PESCARIA BRAVA

Título  
**PROJETO ESTRUTURAL UNIDADE DE SAUDE BASICA BARREIROS**

Referência  
 Conteúdo

UNIDADE BASICA DE SAUDE BARREIROS

Endereço da Obra  
 RODOVIA SC 437, BARREIROS / PESCARIA BRAVA/SC

Resp. Projeto  
 Medidas/Área Total

Data  
 Escala

03/04/2022  
 INDICADA

Resp. Projeto  
 N ART

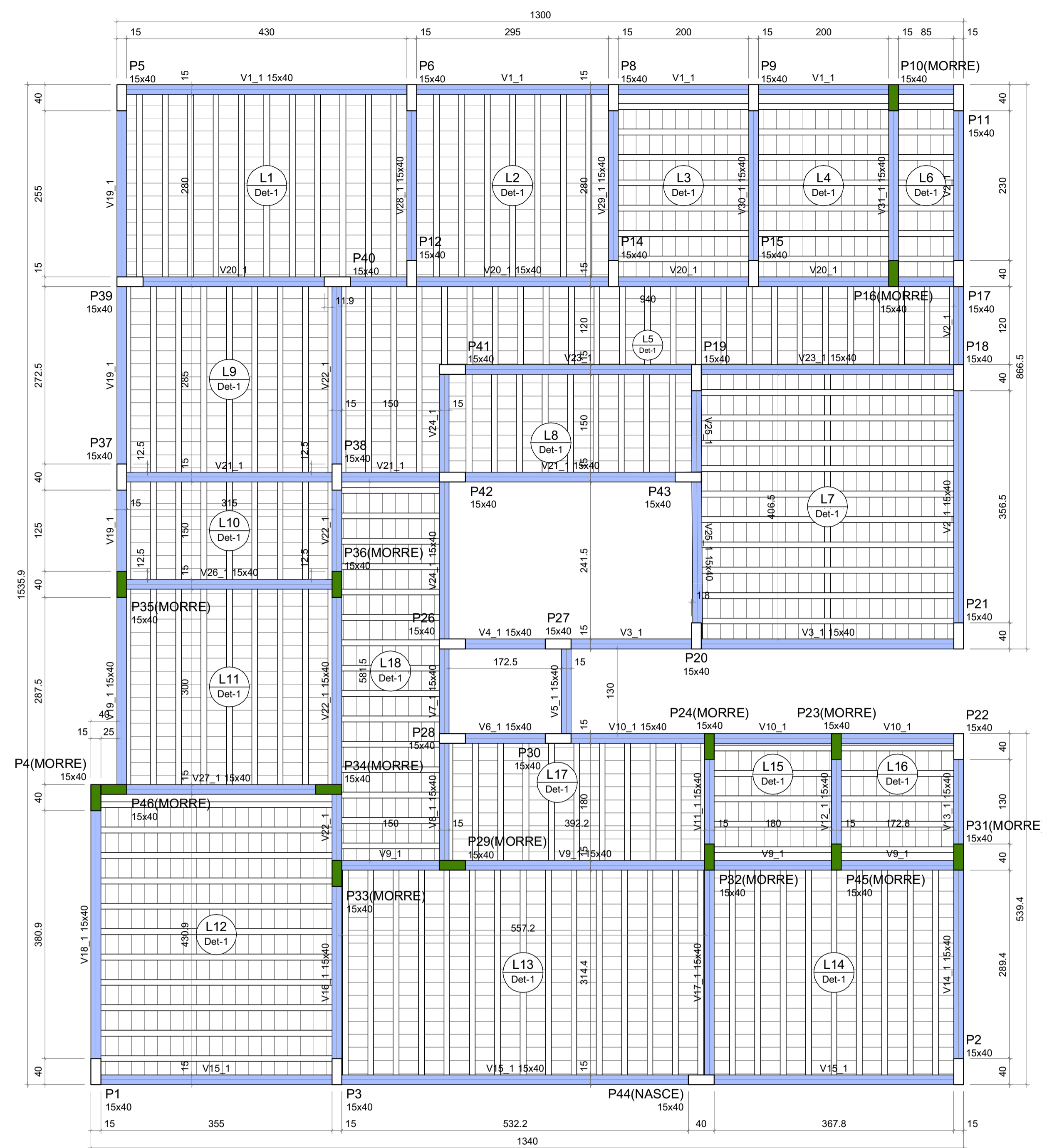
06

CÁSSIA GOULART NOGUEIRA  
 ARQUITETA E URBANISTA - CAU: A260955-0

11







FORMA DO PAVIMENTO 1 PAVIMENTO (NÍVEL 300)

Escala 1:50

Vigas			
Nome	Seção (cm)	Elevação (cm)	Nível (cm)
V1_1	15x40	0	300
V2_1	15x40	0	300
V3_1	15x40	0	300
V4_1	15x40	0	300
V5_1	15x40	0	300
V6_1	15x40	0	300
V7_1	15x40	0	300
V8_1	15x40	0	300
V9_1	15x40	0	300
V10_1	15x40	0	300
V11_1	15x40	0	300
V12_1	15x40	0	300
V13_1	15x40	0	300
V14_1	15x40	0	300
V15_1	15x40	0	300
V16_1	15x40	0	300
V17_1	15x40	0	300
V18_1	15x40	0	300
V19_1	15x40	0	300
V20_1	15x40	0	300
V21_1	15x40	0	300
V22_1	15x40	0	300
V23_1	15x40	0	300
V24_1	15x40	0	300
V25_1	15x40	0	300
V26_1	15x40	0	300
V27_1	15x40	0	300
V28_1	15x40	0	300
V29_1	15x40	0	300
V30_1	15x40	0	300
V31_1	15x40	0	300

Lajes								
Nome	Tipo	Dados			Sobrecarga (kgf/m²)			
		Altura (cm)	Elevação (cm)	Nível (cm)	Peso próprio (kgf/m²)	Adicional	Acidental	Localizada
L1	Trellçada 1D	15	0	300	332	154	2000	-
L2	Trellçada 1D	15	0	300	332	154	2000	-
L3	Trellçada 1D	15	0	300	332	154	2000	-
L4	Trellçada 1D	15	0	300	332	154	2000	-
L5	Trellçada 1D	15	0	300	332	154	2000	-
L6	Trellçada 1D	15	0	300	332	154	2000	-
L7	Trellçada 1D	15	0	300	332	154	2000	-
L8	Trellçada 1D	15	0	300	332	154	2000	-
L9	Trellçada 1D	15	0	300	332	154	2000	-
L10	Trellçada 1D	15	0	300	332	154	2000	-
L11	Trellçada 1D	15	0	300	332	154	2000	-
L12	Trellçada 1D	15	0	300	332	154	2000	-
L13	Trellçada 1D	15	0	300	332	154	2000	-
L14	Trellçada 1D	15	0	300	332	154	2000	-
L15	Trellçada 1D	15	0	300	332	154	2000	-
L16	Trellçada 1D	15	0	300	332	154	2000	-
L17	Trellçada 1D	15	0	300	332	154	2000	-
L18	Trellçada 1D	15	0	300	332	154	2000	-

Características dos materiais	
fck (kgf/cm²)	Ecs (kgf/cm²)
250	241500

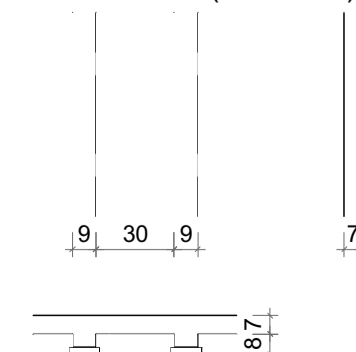
Dimensão máxima do agregado = 19 mm

Pilares			
Nome	Seção (cm)	Elevação (cm)	Nível (cm)
P1	15x40	0	300
P2	15x40	0	300
P3	15x40	0	300
P4	15x40	0	300
P5	15x40	0	300
P6	15x40	0	300
P8	15x40	0	300
P9	15x40	0	300
P10	15x40	0	300
P11	15x40	0	300
P12	15x40	0	300
P14	15x40	0	300
P15	15x40	0	300
P16	15x40	0	300
P17	15x40	0	300
P18	15x40	0	300
P19	15x40	0	300
P20	15x40	0	300
P21	15x40	0	300
P22	15x40	0	300
P23	15x40	0	300
P24	15x40	0	300
P26	15x40	0	300
P27	15x40	0	300
P28	15x40	0	300
P29	15x40	0	300
P30	15x40	0	300
P31	15x40	0	300
P32	15x40	0	300
P33	15x40	0	300
P34	15x40	0	300
P35	15x40	0	300
P36	15x40	0	300
P37	15x40	0	300
P38	15x40	0	300
P39	15x40	0	300
P40	15x40	0	300
P41	15x40	0	300
P42	15x40	0	300
P43	15x40	0	300
P44	15x40	0	300
P45	15x40	0	300
P46	15x40	0	300

Legenda dos pilares	
	Pilar que morre
	Pilar que passa
	Pilar que nasce

Legenda das vigas e paredes	
	Viga

Detalhe 1 (esc. 1:30)



Blocos de enchimento						
Detalhe	Tipo	Nome	Dimensões (cm)			Quantidade
			hb	bx	by	
1	Lajota cerâmica	B8/30/20	8	30	20	1958

## PREFEITURA MUNICIPAL DE PESCARIA BRAVA

Título  
PROJETO ESTRUTURAL UNIDADE DE SAUDE BASICA BARREIROS

Referência  
Conteúdo

UNIDADE BASICA DE SAUDE BARREIROS

Endereço da Obra  
RODOVIA SC 437, BARREIROS / PESCARIA BRAVA/SC

Resp. Projeto  
Medidas/Área Total

ARIELE CORRÊA GUEDES  
ENGENHEIRA CIVIL - CREA:157268-0

Resp. Projeto

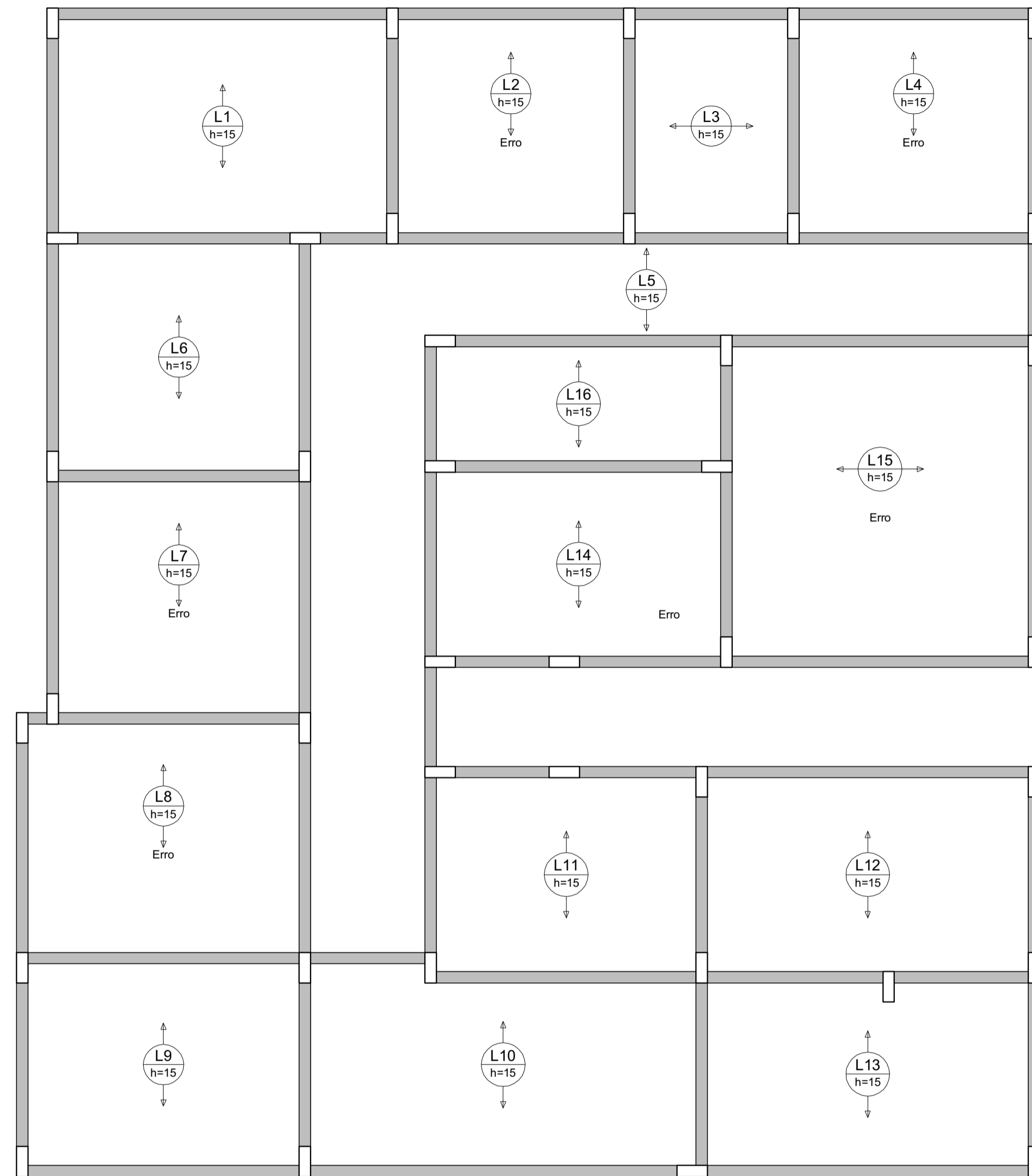
Data  
03/04/2022

Escala  
INDICADA

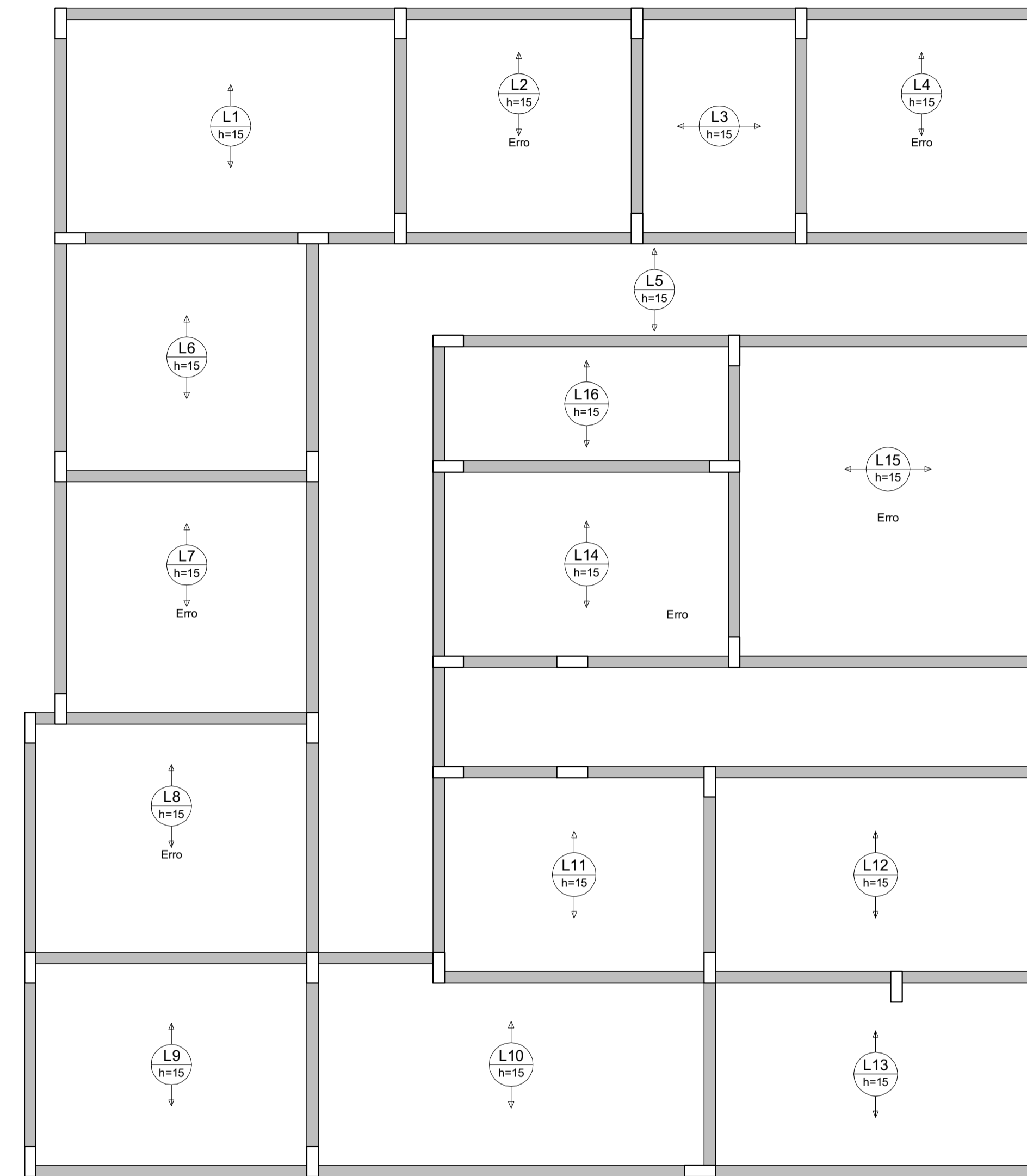
CÁSSIA GOULART NOGUEIRA  
ARQUITETA E URBANISTA - CAU: A209955-0

N ART

Folha  
07



ARMAÇÃO POSITIVA DAS LAJES DO PAVIMENTO COBERTURA (EIXO X) Escala 1:50



ARMAÇÃO POSITIVA DAS LAJES DO PAVIMENTO COBERTURA (EIXO Y) Escala 1:50

RELAÇÃO DO AÇO  
 Positivos X  
 Volume de concreto (C-25) = 13.79 m³  
 Área de forma = 0.00 m²

## PREFEITURA MUNICIPAL DE PESCARIA BRAVA

Título  
 PROJETO ESTRUTURAL UNIDADE DE SAUDE BASICA BARREIROS

Referência Conteúdo

UNIDADE BASICA DE SAUDE BARREIROS

Endereço da Obra  
 RODOVIA SC 437, BARREIROS / PESCARIA BRAVA/SC

Resp. Projeto Medidas/Área Total

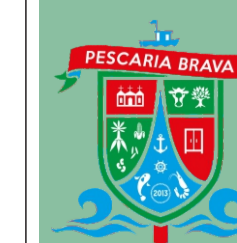
ARIELE CORRÊA GUEDES  
 ENGENHEIRA CIVIL - CREA:157268-0

Resp. Projeto

Data Escala

03/04/2022 INDICADA

N ART Folha

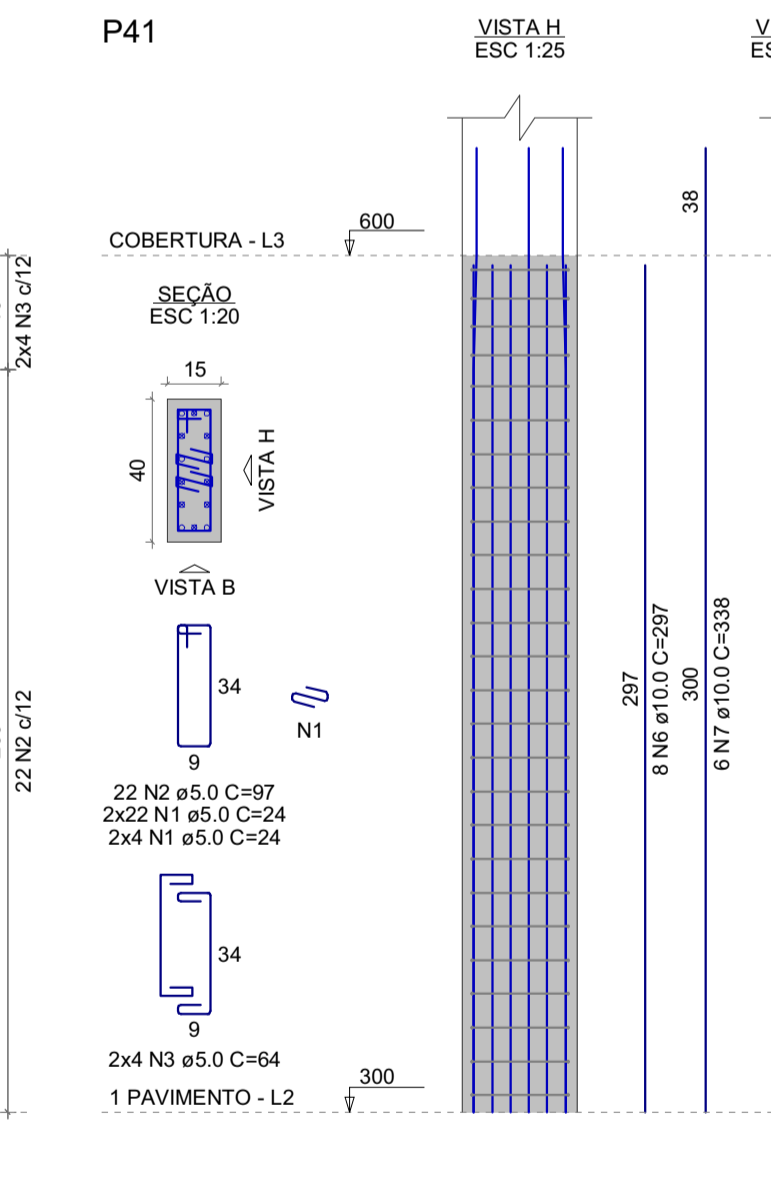
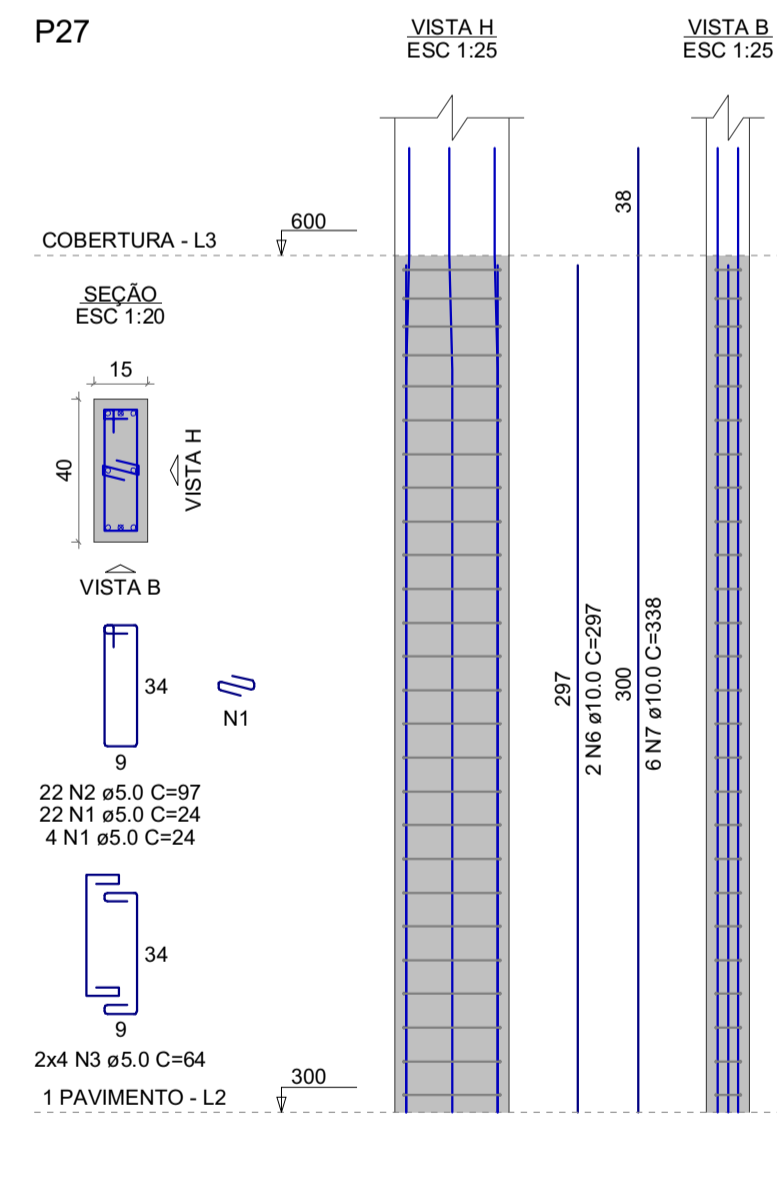
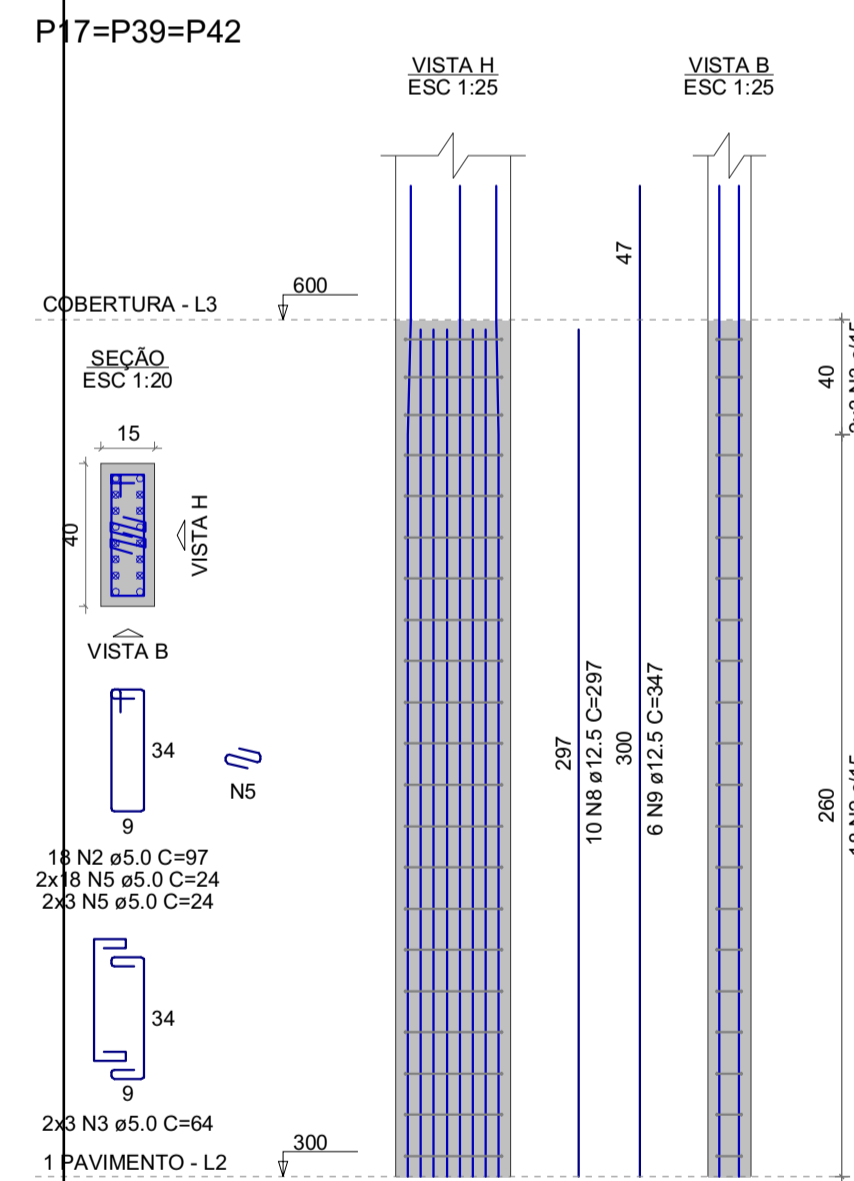
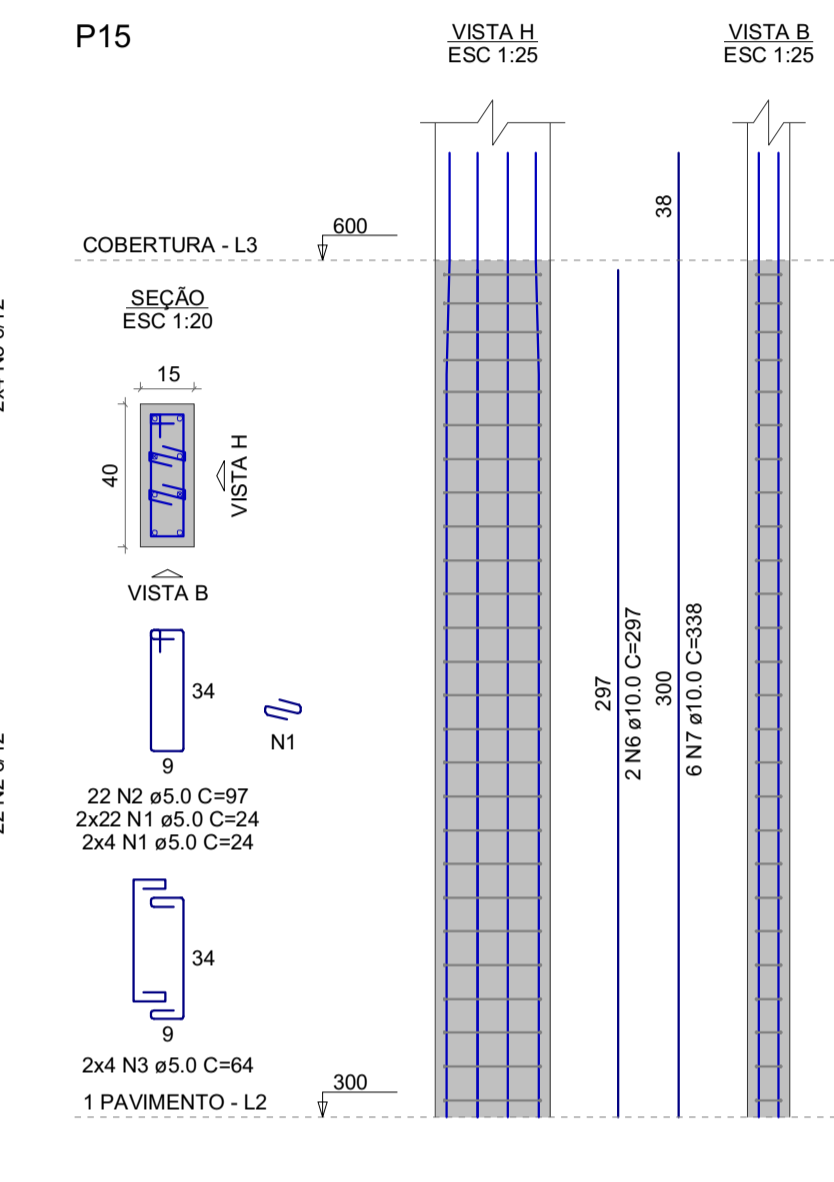
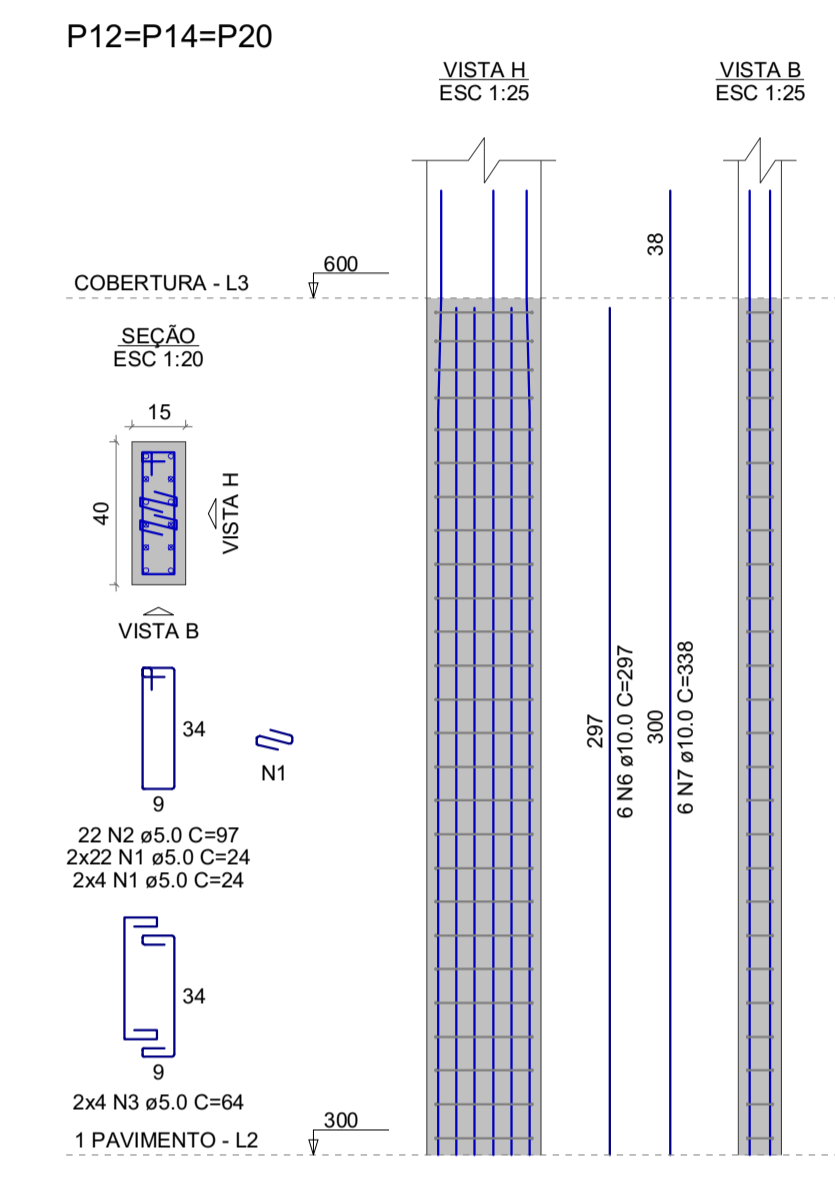
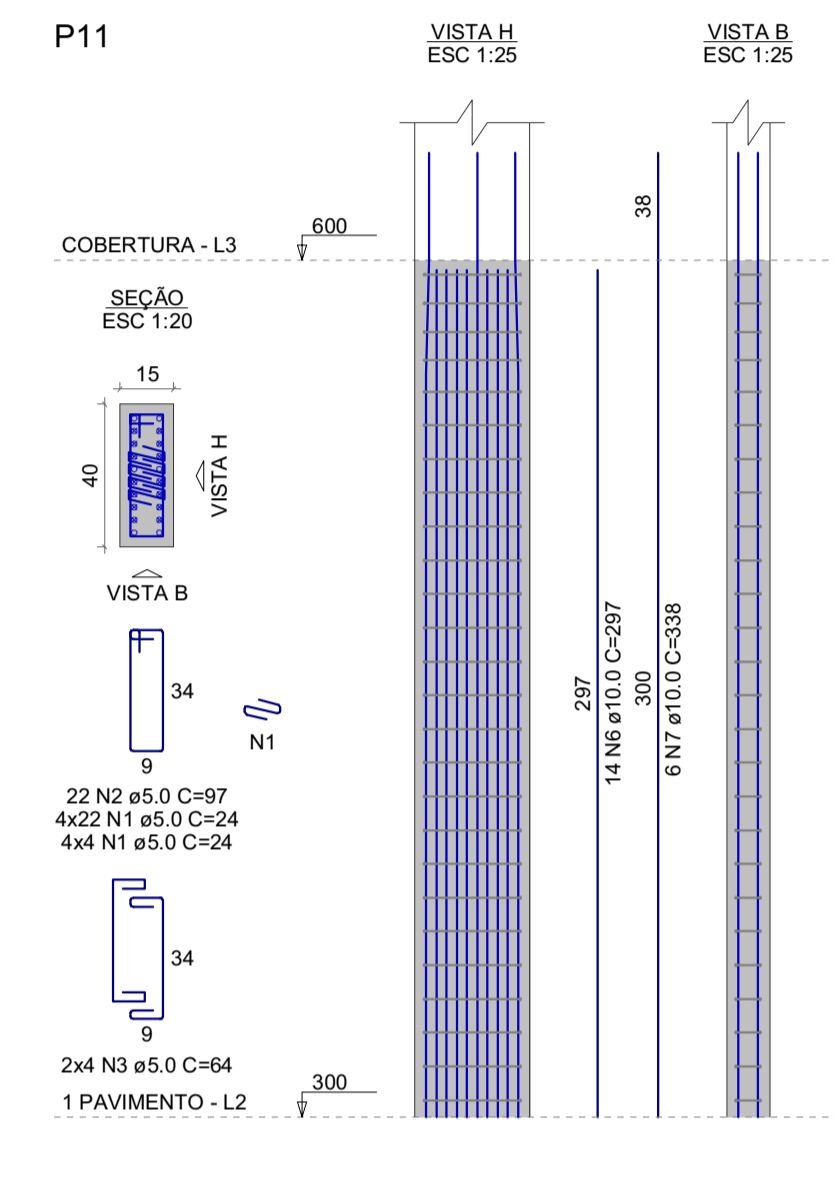
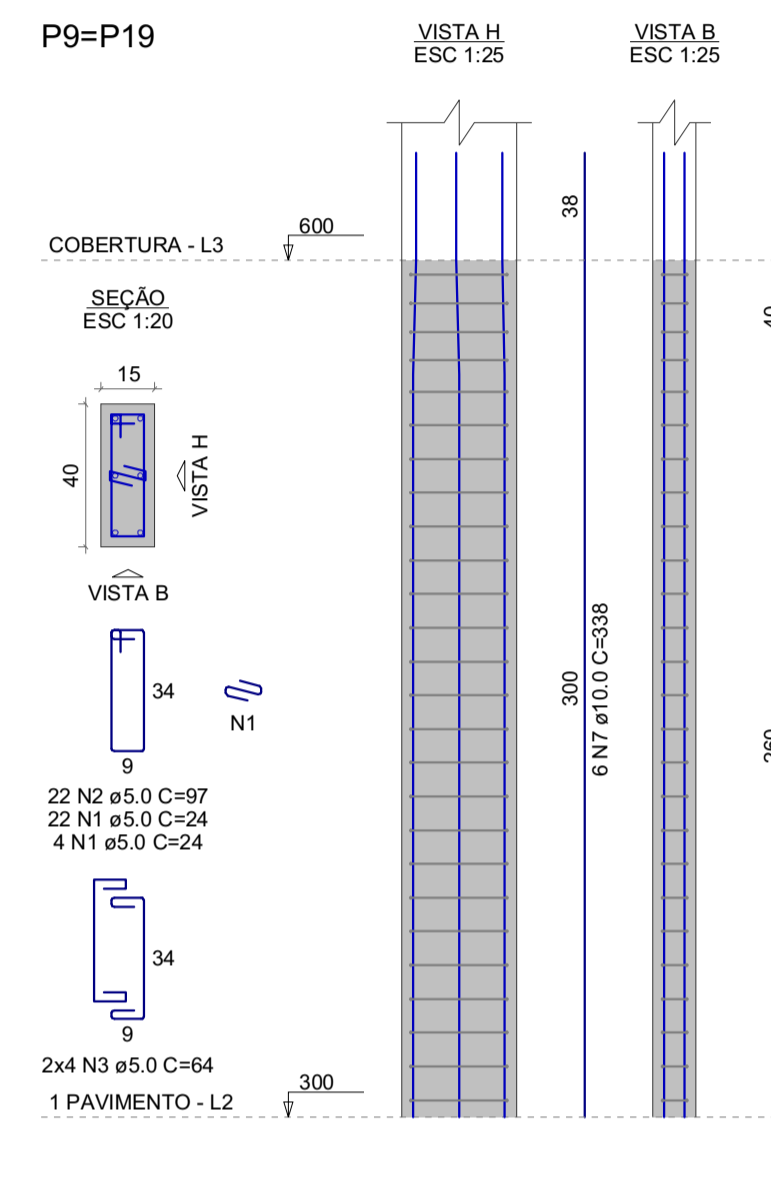
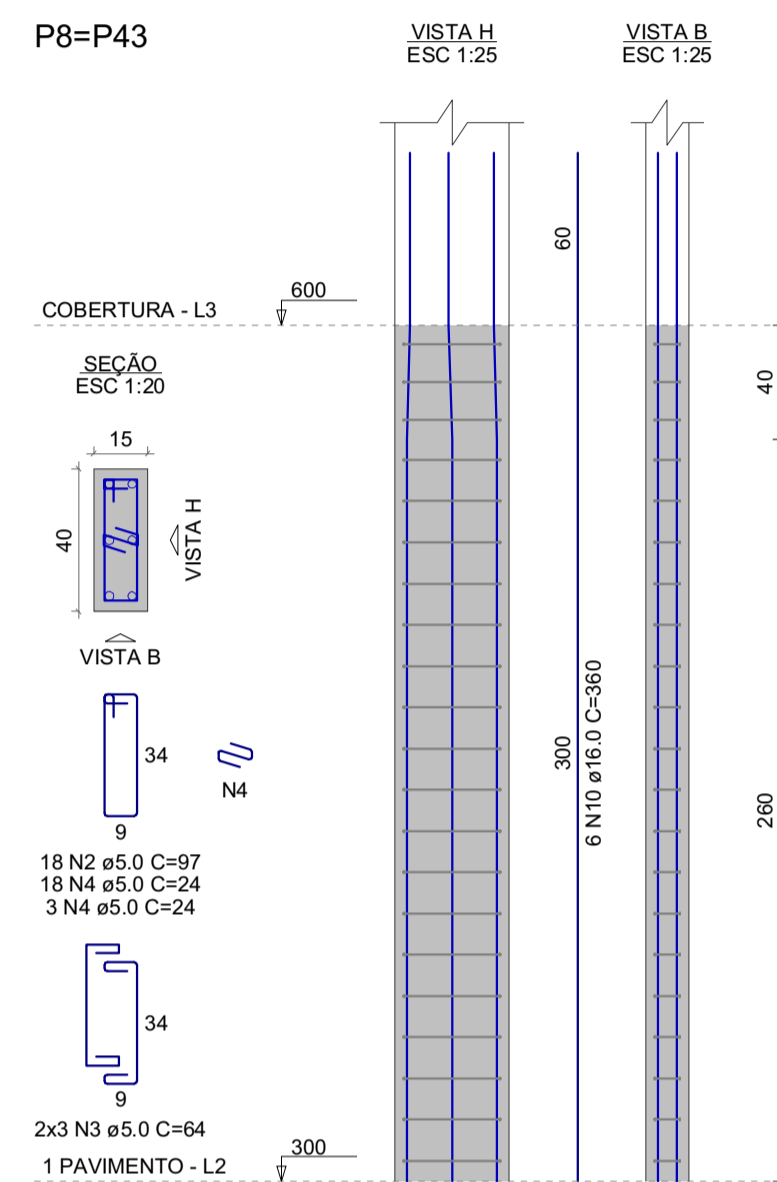
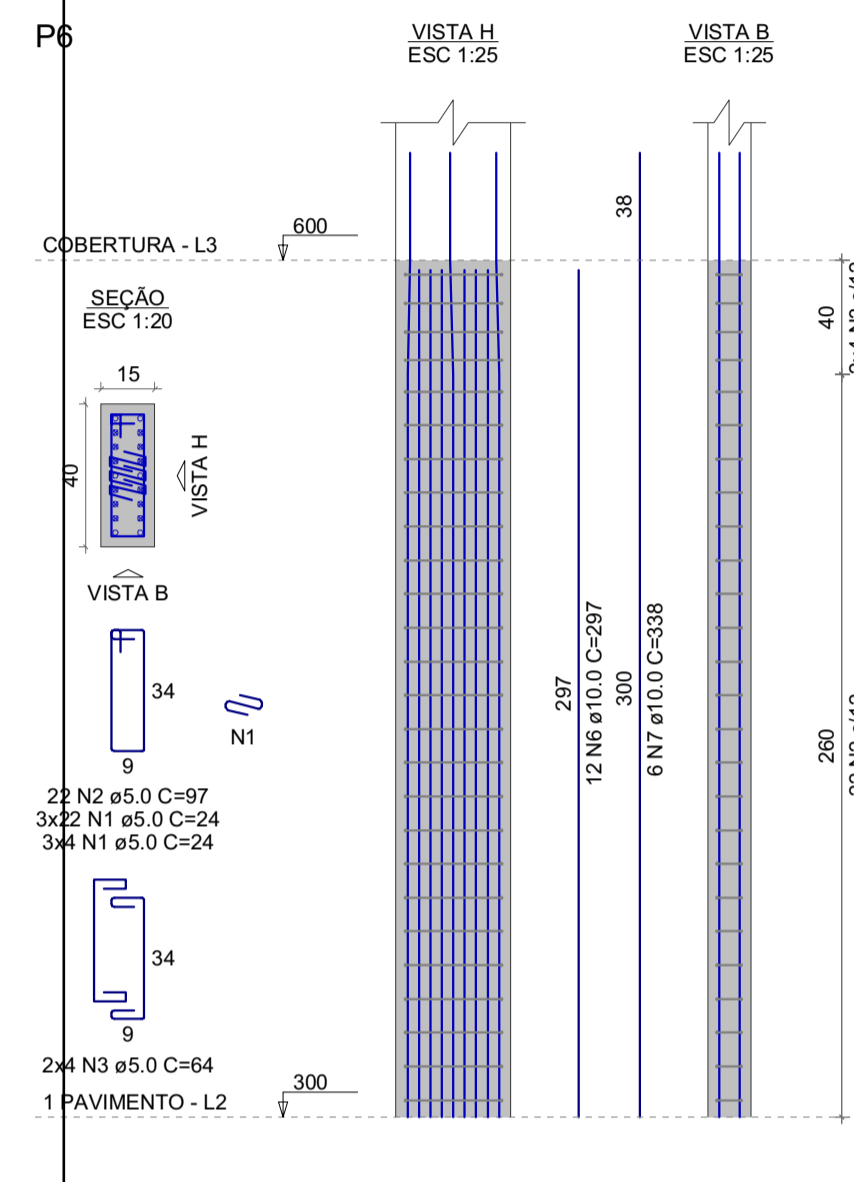


CÁSSIA GOULART NOGUEIRA  
 ARQUITETA E URBANISTA - CAU: A269955-0

08

11





RELAÇÃO DO AÇO

AÇO	N	DIAM (mm)	QUANT	C.UNIT (cm)	C.TOTAL (cm)
CA60	1	5.0	520	24	12480
	2	5.0	310	97	30070
	3	5.0	110	64	7040
	4	5.0	42	24	1008
	5	5.0	126	24	3024
CA50	6	10.0	56	297	16632
	7	10.0	60	338	20280
	8	12.5	30	297	8910
	9	12.5	18	347	6246
	10	16.0	12	360	4320

RESUMO DO AÇO

AÇO	DIAM (mm)	C.TOTAL (m)	PESO + 10% (kg)
CA50	10.0	389.1	260.3
CA60	12.5	151.6	160.6
CA60	16.0	43.2	75
CA60	5.0	536.2	90.9

PESO TOTAL (kg)  
CA50 485.9  
CA60 90.9

Volume de concreto (C-25) = 2.70 m³  
Área de forma = 49.50 m²

## PREFEITURA MUNICIPAL DE PESCARIA BRAVA

Título  
**PROJETO ESTRUTURAL UNIDADE DE SAUDE BASICA BARREIROS**

Referência  
Conteúdo

UNIDADE BASICA DE SAUDE BARREIROS

Endereço da Obra  
RODOVIA SC 437, BARREIROS / PESCARIA BRAVA/SC

Resp. Projeto  
Medidas/Área Total

Resp. Projeto  
ARIELE CORRÊA GUEDES  
ENGENHEIRA CIVIL - CREA:157268-0

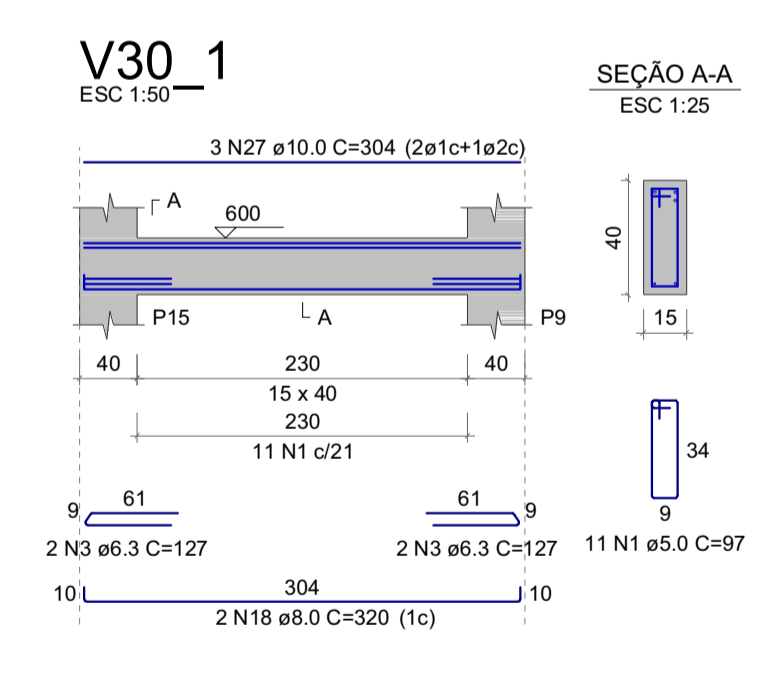
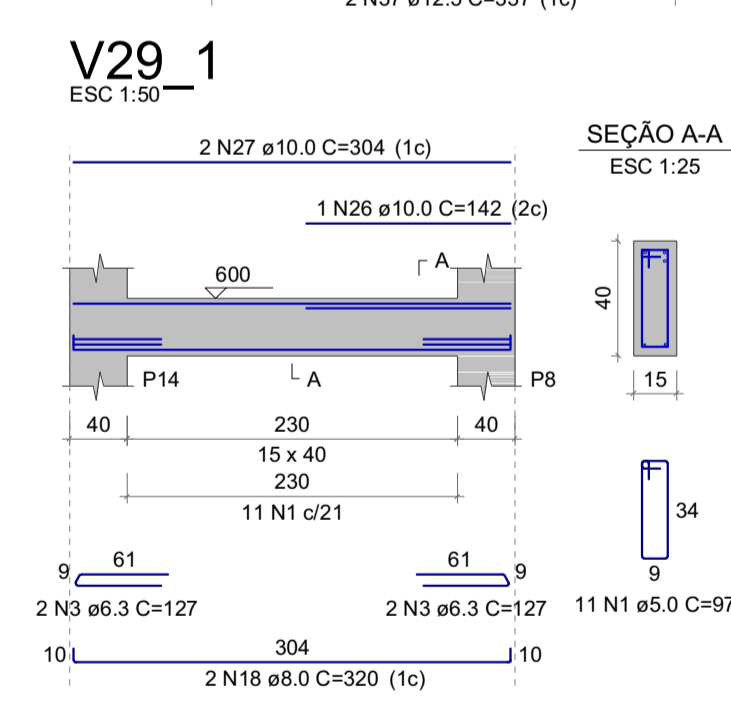
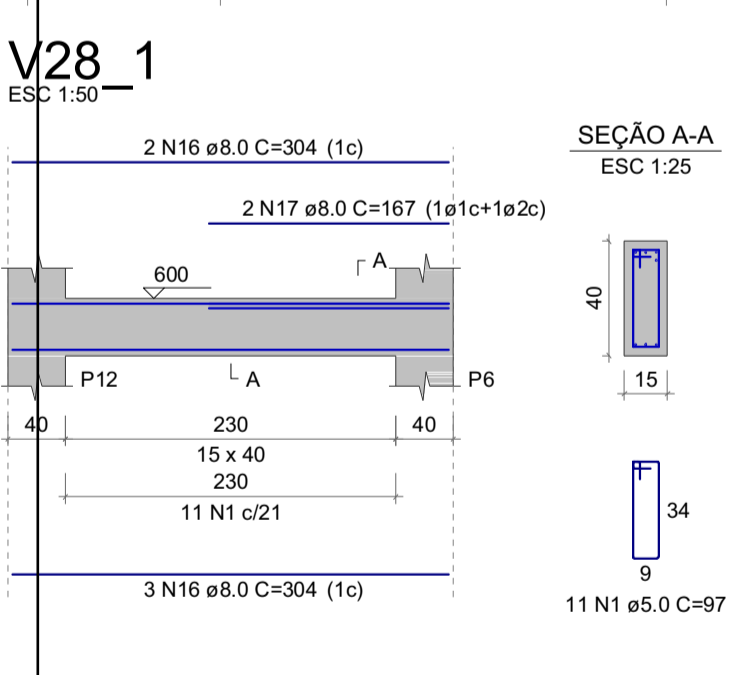
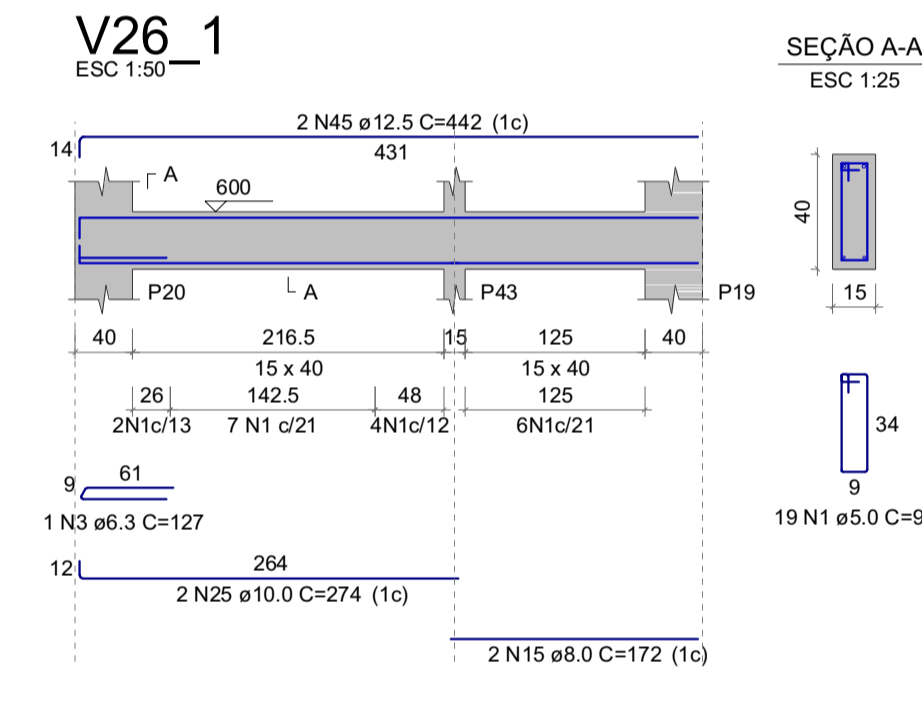
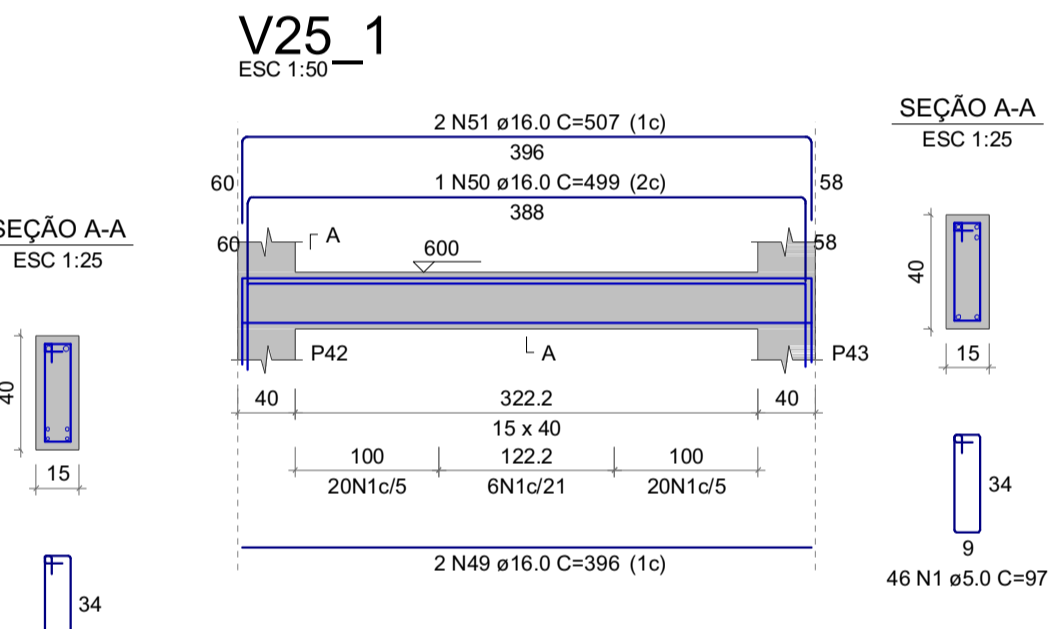
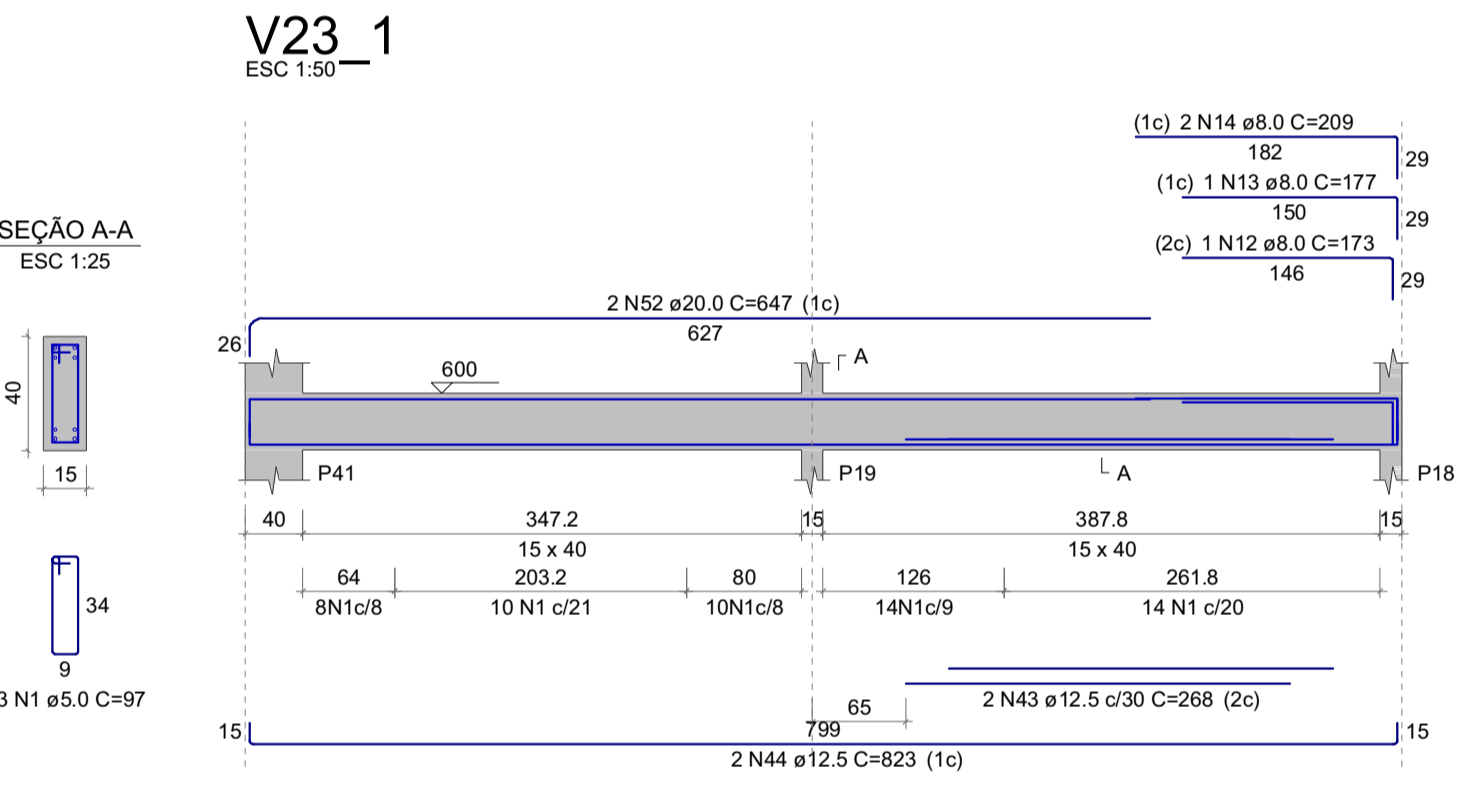
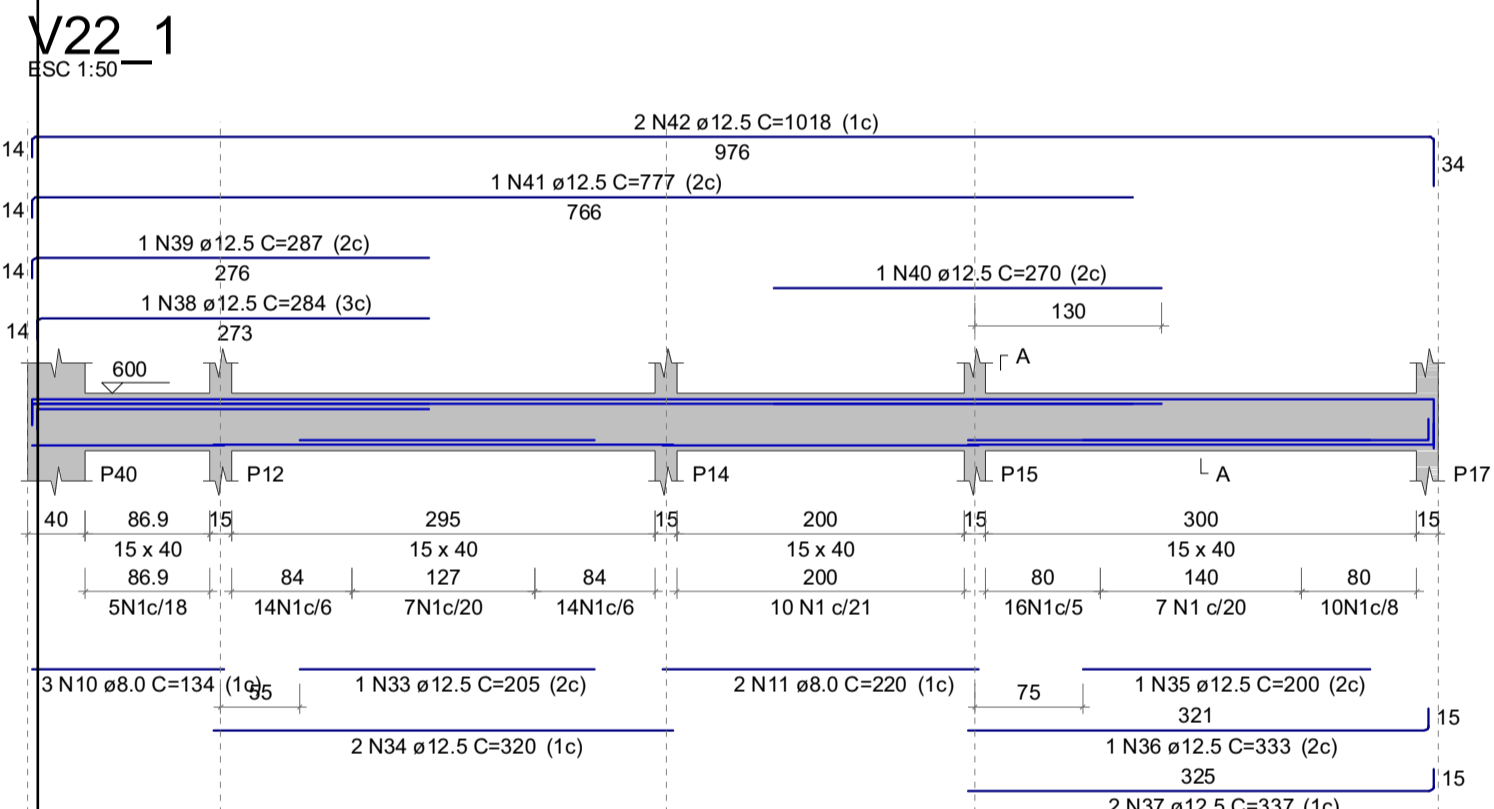
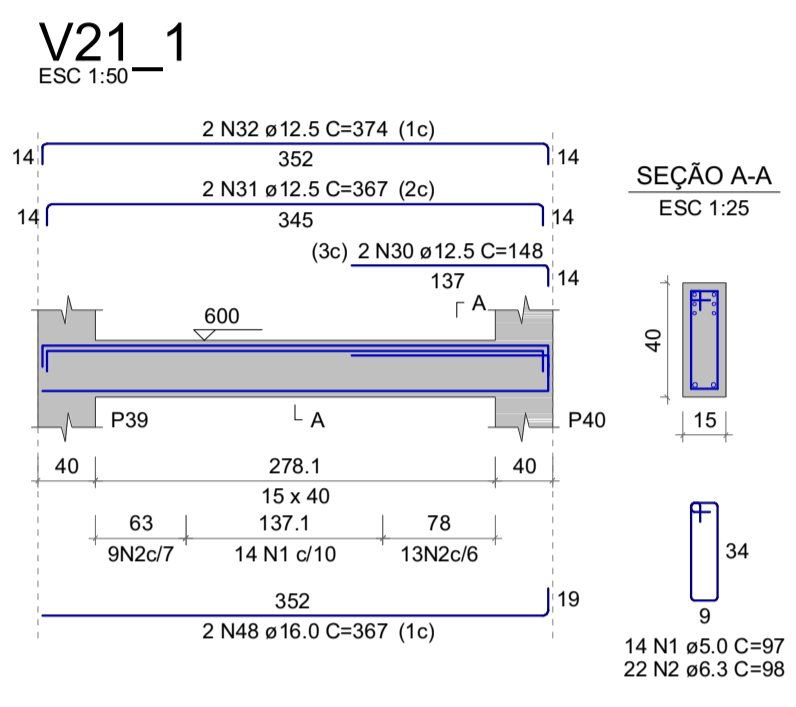
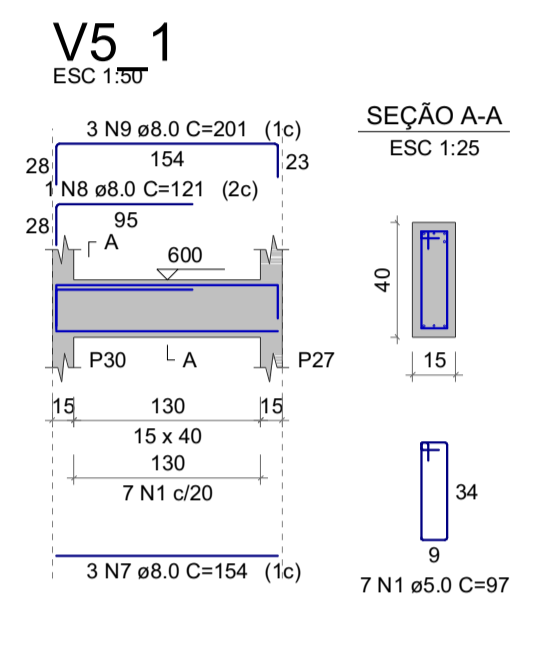
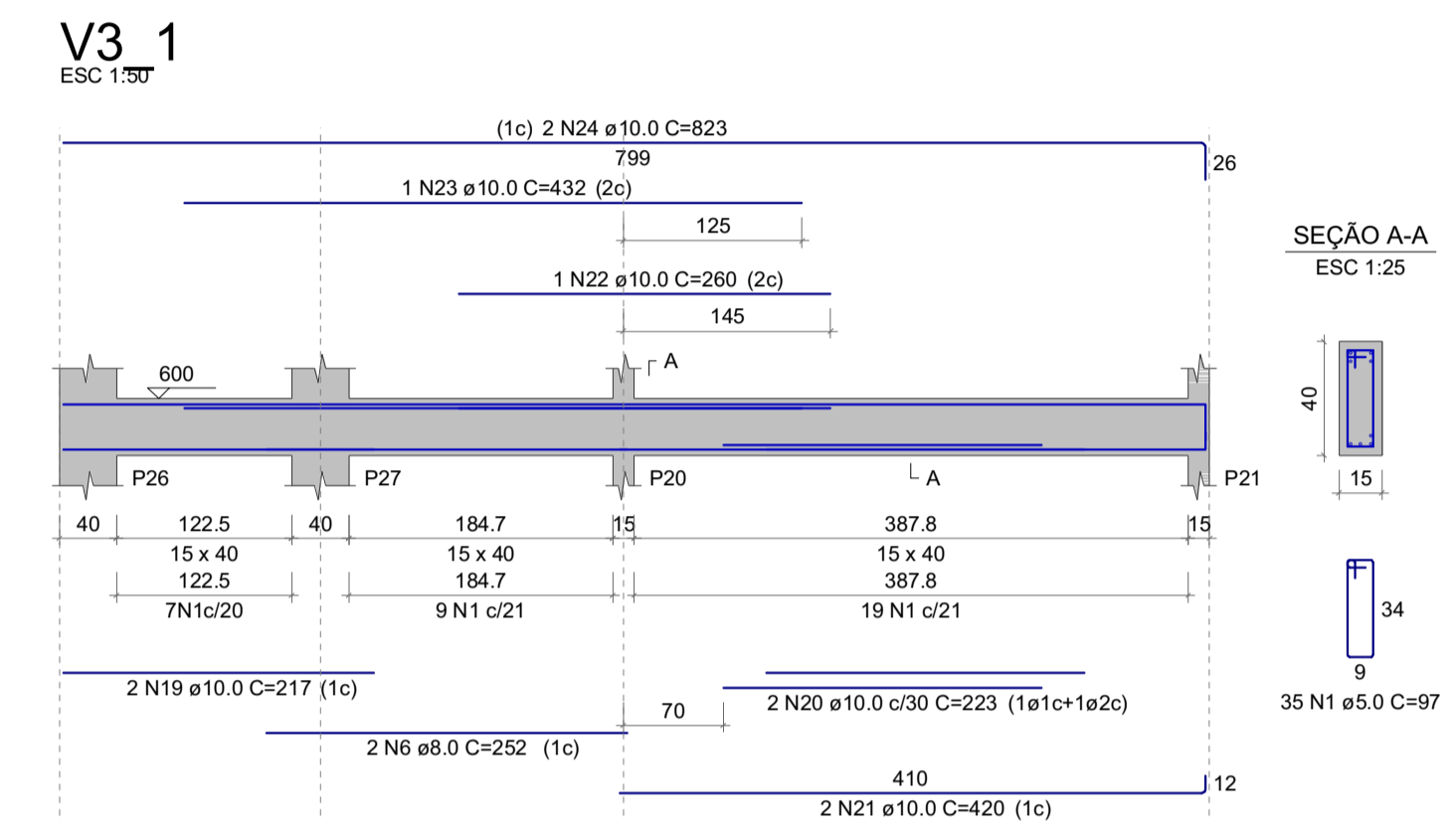
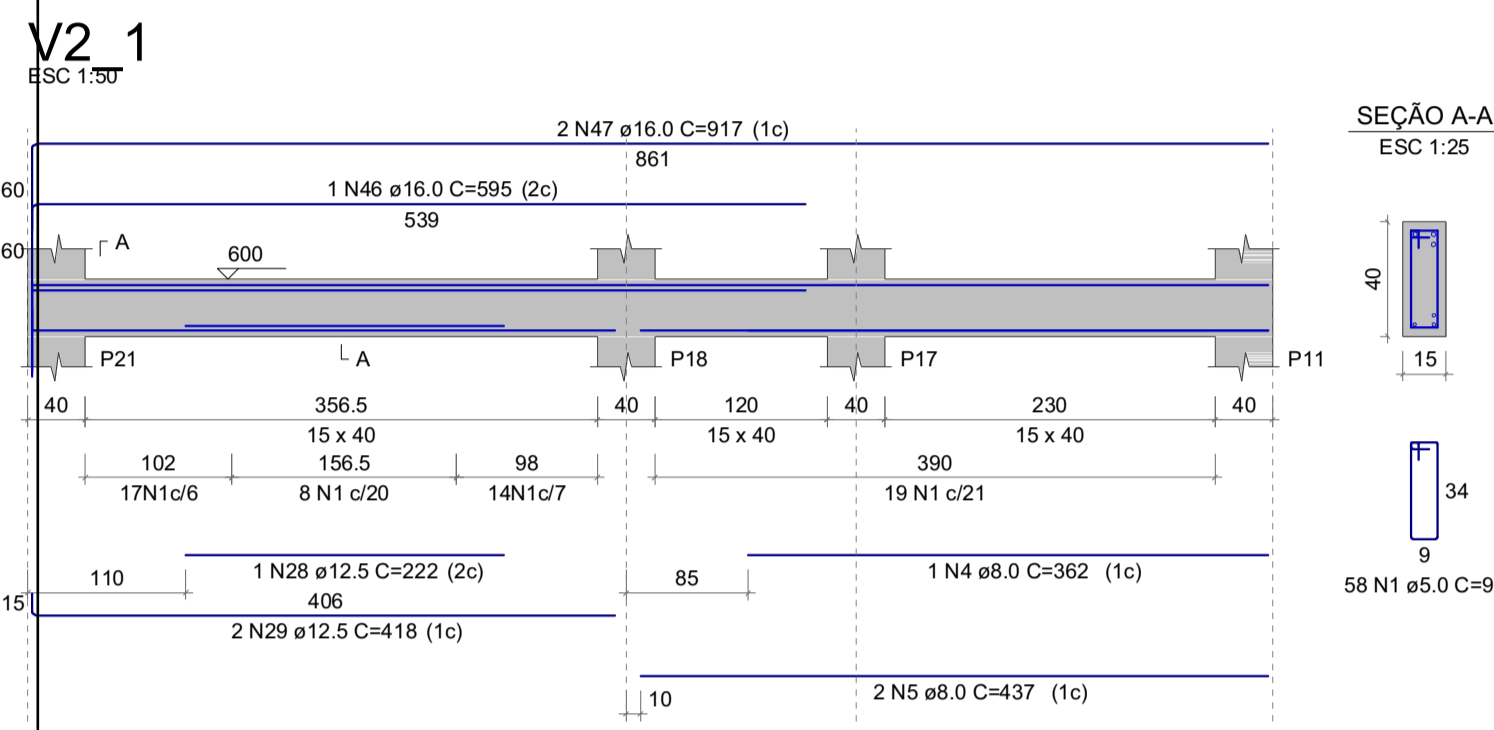
Resp. Projeto  
CÁSSIA GOULART NOGUEIRA  
ARQUITETA E URBANISTA - CAU: A260955-0

Data  
03/04/2022

Escala  
INDICADA

09

11



RELAÇÃO DO AÇO

AÇO	N	DIAM (mm)	QUANT	C. UNIT (cm)	C. TOTAL (cm)
CA50	1	5.0	351	97	34047
CA50	2	6.3	22	98	2156
CA50	3	6.3	9	127	1143
CA50	4	8.0	1	362	362
CA50	5	8.0	2	437	874
CA50	6	8.0	2	252	504
CA50	7	8.0	3	154	462
CA50	8	8.0	1	121	121
CA50	9	8.0	3	201	603
CA50	10	8.0	3	134	402
CA50	11	8.0	2	220	440
CA50	12	8.0	1	173	173
CA50	13	8.0	1	177	177
CA50	14	8.0	2	209	418
CA50	15	8.0	2	172	344
CA50	16	8.0	5	304	1520
CA50	17	8.0	2	167	334
CA50	18	8.0	4	320	1280
CA50	19	10.0	2	217	434
CA50	20	10.0	2	223	446
CA50	21	10.0	2	420	840
CA50	22	10.0	1	260	260
CA50	23	10.0	1	432	432
CA50	24	10.0	2	523	1046
CA50	25	10.0	2	274	548
CA50	26	10.0	1	142	142
CA50	27	10.0	5	304	1520
CA50	28	12.5	1	222	222
CA50	29	12.5	2	418	836
CA50	30	12.5	2	148	296
CA50	31	12.5	2	367	734
CA50	32	12.5	2	374	748
CA50	33	12.5	1	205	205
CA50	34	12.5	2	320	640
CA50	35	12.5	1	200	200
CA50	36	12.5	1	333	333
CA50	37	12.5	2	337	674
CA50	38	12.5	1	284	284
CA50	39	12.5	1	287	287
CA50	40	12.5	1	270	270
CA50	41	12.5	1	777	777
CA50	42	12.5	2	1018	2036
CA50	43	12.5	2	268	536
CA50	44	12.5	2	823	1646
CA50	45	12.5	2	442	884
CA50	46	16.0	1	595	595
CA50	47	16.0	2	917	1834
CA50	48	16.0	2	367	734
CA50	49	16.0	2	396	792
CA50	50	16.0	1	499	499
CA50	51	16.0	2	507	1014
CA50	52	20.0	2	647	1294

RESUMO DO AÇO

AÇO	DIAM (mm)	C. TOTAL (m)	PESO + 10% (kg)
CA50	6.3	33	8.9
CA50	8.0	80.1	34.8
CA50	10.0	62.7	42.5
CA50	12.5	116.1	123
CA50	16.0	54.7	94.9
CA50	20.0	12.9	35.1
CA60	5.0	340.5	57.7
PESO TOTAL (kg)			
CA50		339.2	
CA60		57.7	

Volume de concreto (C-25) = 2.87 m³  
Área de forma = 33.56 m²

# PREFEITURA MUNICIPAL DE PESCARIA BRAVA

Título  
**PROJETO ESTRUTURAL UNIDADE DE SAUDE BASICA BARREIROS**

Referência  
Conteúdo

UNIDADE BASICA DE SAUDE BARREIROS

Endereço da Obra  
RODOVIA SC 437, BARREIROS / PESCARIA BRAVA/SC

Resp. Projeto  
Medidas/Área Total

Data  
03/04/2022

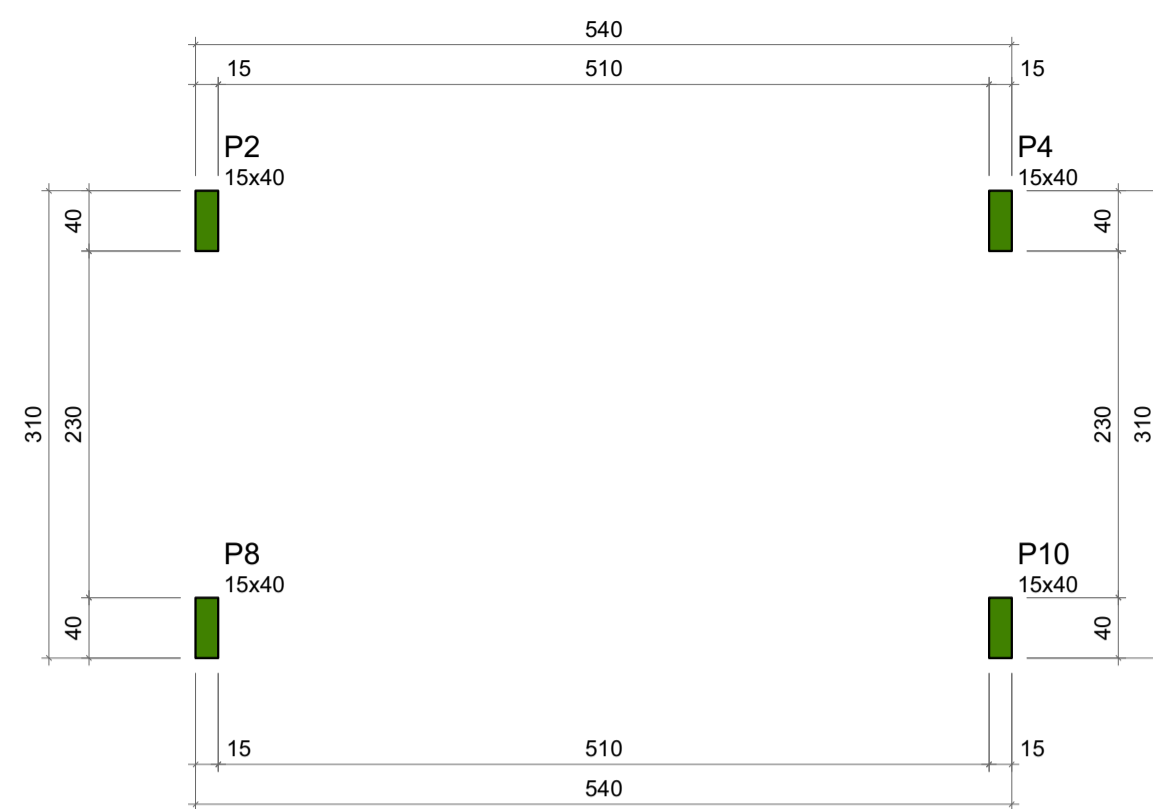
Escala  
INDICADA

Resp. Projeto  
N ART

Folha  
10


**CÁSSIA GOULART NOGUEIRA**  
ARQUITETA E URBANISTA - CAU: A260955-0



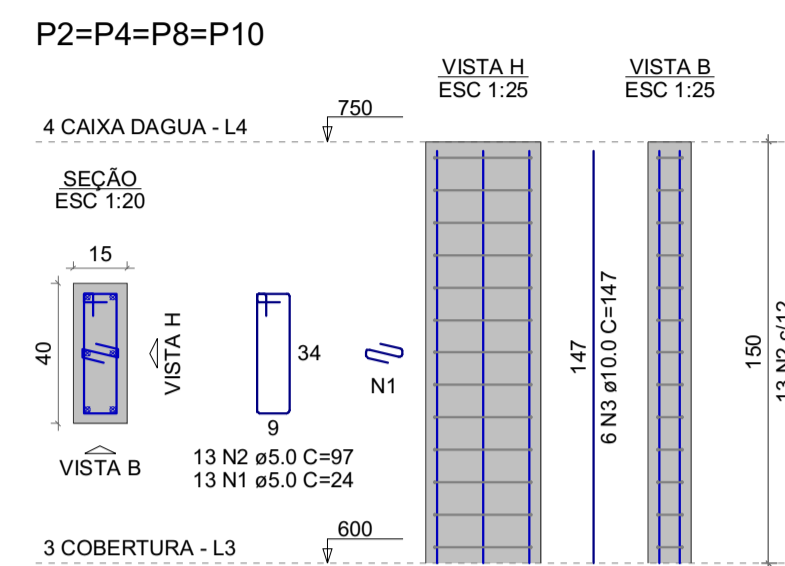


Características dos materiais	
fck (kgf/cm <sup>2</sup> )	Ecs (kgf/cm <sup>2</sup> )
250	241500

Dimensão máxima do agregado = 19 mm

Pilares			
Nome	Seção (cm)	Elevação (cm)	Nível (cm)
P2	15x40	0	750
P4	15x40	0	750
P8	15x40	0	750
P10	15x40	0	750

Legenda dos pilares	
	Pilar que morre



RELAÇÃO DO AÇO

AÇO	N	DIAM (mm)	QUANT	C.UNIT (cm)	C.TOTAL (cm)
CA60	1	5.0	52	24	1248
CA60	2	5.0	52	97	5044
CA50	3	10.0	24	147	3528

RESUMO DO AÇO

AÇO	DIAM (mm)	C.TOTAL (m)	PESO + 10% (kg)
CA50	10.0	35.3	23.9
CA60	5.0	82.9	10.7
<b>PESO TOTAL (kg)</b>			
CA50		23.9	
CA60		10.7	

Volume de concreto (C-25) = 0.36 m<sup>3</sup>  
Área de forma = 6.60 m<sup>2</sup>

FORMA DO PAVIMENTO 4 CAIXA DAGUA

Escala 1:50



ARMAÇÃO POSITIVA DA ESCADA E1

CORTE A-A (LE1)

**PREFEITURA MUNICIPAL DE PESCARIA BRAVA**

Título  
PROJETO ESTRUTURAL UNIDADE DE SAUDE BASICA BARREIROS

Referência  
Conteúdo

UNIDADE BASICA DE SAUDE BARREIROS

Endereço da Obra  
RODOVIA SC 437, BARREIROS / PESCARIA BRAVA/SC

Resp. Projeto  
Medidas/Área Total

ARIELE CORRÉA GUEDES  
ENGENHEIRA CIVIL - CREA:157268-0

Resp. Projeto

Data  
03/04/2022

Escala  
INDICADA

CÁSSIA GOULART NOGUEIRA  
ARQUITETA E URBANISTA - CAU: A260955-0

N ART

Folha